



## PUBLIC HEARING SCHEDULED FOR IL 18 RIVER BRIDGE PROJECT

A Public Hearing will be held on Wednesday, February 28, 2024 to present the Preferred Alternative and receive public comment on the IL 18 River Bridge Project and the removal of the existing Historic Bridge as a result of the project. At the Public Hearing, the Corridor 3 Alignment will be presented as the Preferred Alternative along with an overview of the selection process.

### Introduction

The existing IL 18 Bridge over the Illinois River at the city of Henry was constructed in 1934. Due to the age and condition of the bridge, the Illinois Department of Transportation (IDOT) District 4 evaluated potential improvement options for the bridge. The project study limits extend from the intersection of IL 18 and 3rd Street in Henry on the west to the intersection of IL 18 and IL 26 on the east. The IL 18 River Bridge Project study included a detailed evaluation of potential improvements to IL 18 and the bridge over the Illinois River.

### Public Hearing

**February 28, 2024**  
**5-7 p.m.**

Henry-Senachwine  
High School Gymnasium  
1023 College Avenue  
Henry, IL 61537

### About the Study

The purpose of the project is to accommodate IL 18 traffic through the project area across the Illinois River on a transportation system that is structurally sound, meets current design standards, provides a safe crossing for the public, reduces flooding over IL 18, supports connectivity needs, and meets the need of river traffic.

### Range of Reasonable Alternatives

The following alternatives were considered for the IL 18 River Bridge Project:

- Do Nothing (No-Build),
- Reconstruction/Rehabilitation,
- Build a new bridge and retain the existing bridge, and
- Bridge replacement (build a new bridge with associated roadway improvements) along seven potential alignment corridors.

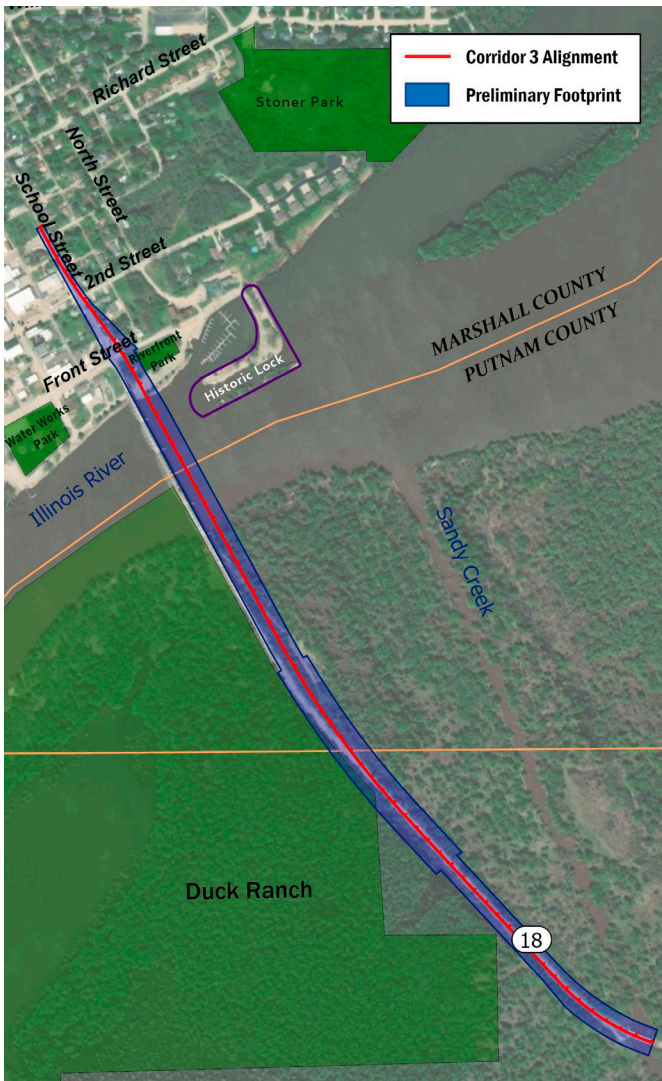
Each of the alternatives were initially screened to determine if they would meet the project's purpose and need or if they had a fatal flaw regarding design, feasibility, environmental impacts, and/or community concerns. If the alternative would not meet the project's purpose and need, it was dismissed from further evaluation. If the alternative had a fatal flaw, it was also dismissed from further evaluation.

Based on the evaluation completed for this project, the following are the alternatives that were carried forward for detailed evaluation and were presented at Public Meeting #2:

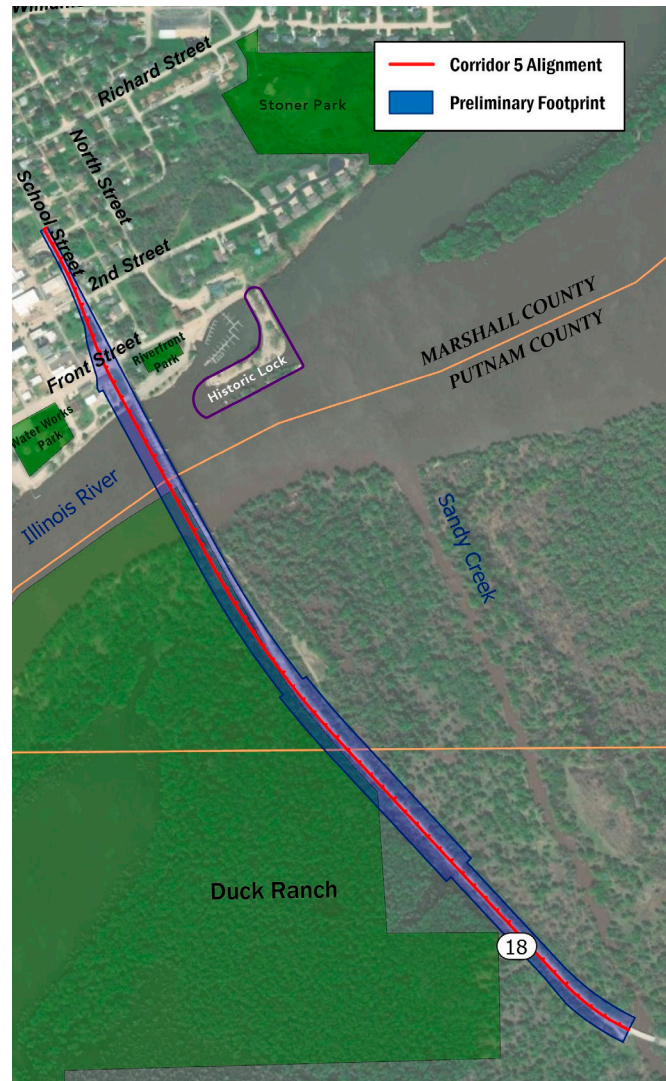
- No-Build Alternative
- Bridge Replacement Alternative
  - Corridor 3 Alignment
  - Corridor 5 Alignment

Additional evaluation and screening were performed on these alternatives following further development of engineering alignments and profiles.

## Bridge Replacement Alternative Alignments - Alternative 3 vs. Alternative 5



Corridor 3 is adjacent to the existing bridge, located just upstream



Corridor 5 is adjacent to the existing bridge, located just downstream

### Why Was Alternative 3 Selected?

After careful evaluation, the Corridor 3 Alignment was selected as the Preferred Alternative based on the following:

- Less impact to the Section 4(f) Resource—Duck Ranch (owned by IDNR)
- Less right-of-way acquisition,
- Fewer wetland impacts,
- Fewer forested habitat impacts.

Additionally, the Illinois Department of Natural Resources (IDNR) has indicated their preference for the Corridor 3 Alignment because it would not require acquisition of Duck Ranch property, and the potential impact is limited to the easement area only. At the July 6, 2022 Community Advisory Group (CAG) meeting, the CAG provided consensus on the selection of the Corridor 3 Alignment as the Preferred Alternative.

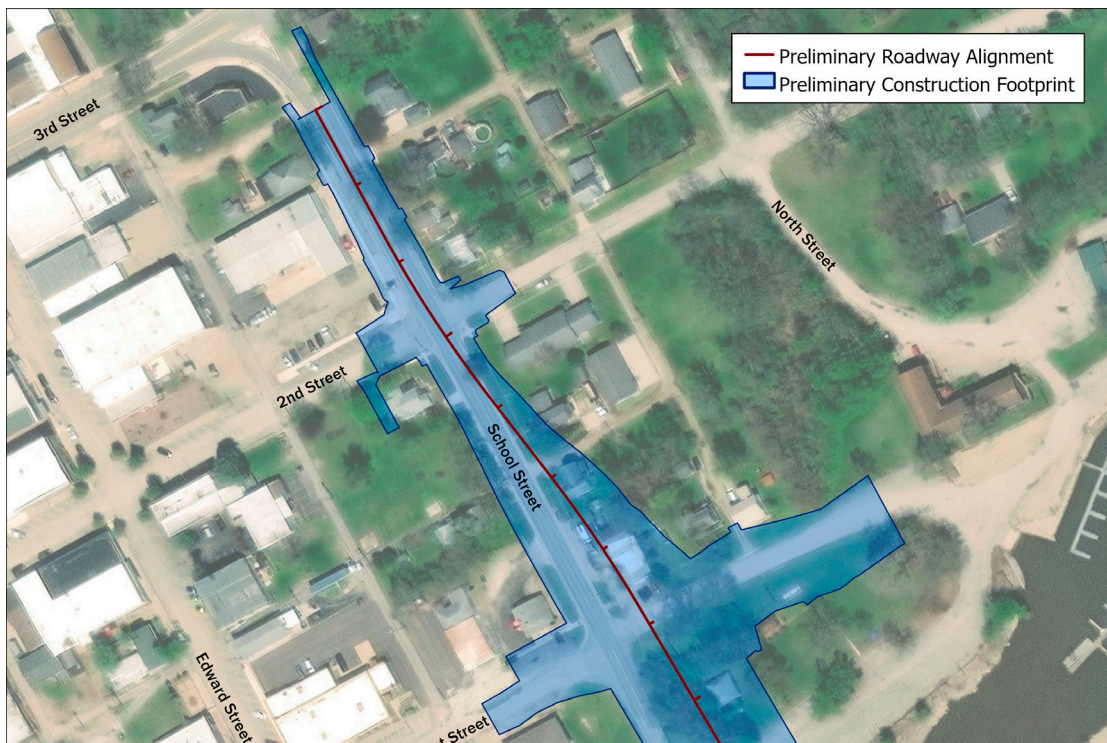


## Preferred Alternative - Summary of Impacts

Screening Criteria	Refined Corridor 3 Alignment
Right-of-way	9.0 acres
Temporary Easement	3.1 acres
Residential Displacements	5
Commercial Displacements	2
Historic Section 106/4(f) Resources	1 (IL 18 Bridge)
Recreational Section 4(f) Resources	Duck Ranch - 3.4 acres Duck Ranch easement, 0.6 acres property acquisition Riverfront Park – Temporary grading
Floodway	7.2 acres
Floodplain	0.3 acres
Wetlands	3.0 acres
Forested Habitat	6.4 acres
Special Waste Sites	8
Farmland	0 acres
Water Supply Wells	0
Environmental Justice Communities	0
Section 6(f)/OSLAD	0
Threatened/Endangered Species	0

## Preferred Alternative

- Cromwell Drive spanned
- Front Street remains open underneath new bridge
- New IL 18 roadway ties down at 2nd Street
- Access eliminated along IL 18 between Front and 2nd streets





## PREFERRED ALTERNATIVE

### Bridge Elevation



- 3% approach grades east of the bridge
- 4% approach grades west of the bridge
- Highest point of new bridge will be 5 to 6 feet higher than existing bridge



A new entrance for Duck Ranch will be provided on the south side of IL 18.



The new bridge will consist of one 12-foot wide travel lane in each direction with 8-foot wide shoulders.



The new bridge will span Cromwell Drive and Front Street.

We encourage and welcome **Public Comments** throughout the project. At the Public Hearing there will be comment sheets available for attendees to fill out or to mail back to the project study team. The public can also send comments to [Contact@IL18RiverBridgeProject.com](mailto:Contact@IL18RiverBridgeProject.com) or fill out the online comment form at [www.IL18RiverBridgeProject.com](http://www.IL18RiverBridgeProject.com). Comments received by March 27, 2024 will be included with the Public Hearing meeting record.