

IL18 RIVER BRIDGE PROJECT PUBLIC MEETING #2 SUMMARY

September 2, 2022

1.0 Introduction

The existing IL 18 bridge over the Illinois River at the city of Henry was constructed in 1934. Due to the age and condition of the bridge, the Illinois Department of Transportation (IDOT) District 4 is evaluating potential improvement options for the bridge. The project study limits extend from the intersection of IL 18 and 3rd Street in Henry on the west to the intersection of IL 18 and IL 26 on the east (Figure 1). The IL 18 River Bridge Project study includes detailed evaluation of potential improvements to IL 18 and the bridge over the Illinois River.

IDOT develops and implements projects using a three-phase process. The IL 18 River Bridge Project is currently at the beginning of Phase I: Preliminary Engineering and Environmental Studies. During this phase, IDOT will study a range of potential improvements, conduct public involvement activities, and complete an environmental analysis. The Phase I Study will determine the alignment, bridge type, and right-of-way needs for the project.

The purpose of the project is to accommodate IL 18 traffic through the project area and across the Illinois River on a transportation system that is structurally sound, meets current design standards, provides a safe crossing for the public, reduces flooding over IL 18, supports regional connectivity needs, and meets the need of river traffic.

IDOT hosted the second public open house meeting to provide an update on the status of the IL 18 River Bridge Project. The purpose of the meeting was to present the range of alternatives considered for the project and obtain public input on the alternatives identified to be carried forward for detailed evaluation. Interested persons visited the open house between 5:00 p.m. and 7:00 p.m. IDOT provided information regarding the study schedule and process, purpose and need, range of reasonable alternatives, bridge replacement alternative alignments, evaluation of potential alignment corridors, public involvement activities, and Section 106 and Section 4(f). Attendees had the opportunity to review exhibits, provide comments, and meet with IDOT and study team representatives on a one-on-one basis.



The public meeting was held on June 29, 2022 between the hours of 5:00 p.m. – 7:00 p.m. at the Henry United Methodist Church Fellowship Hall on 225 Lincoln Street, Henry, Illinois 61537. Sixty-eight people attended the public meeting.

This public meeting summary describes the tools used to announce and publicize the meetings, the information presented, and the comments received.

FIGURE 1 – PROJECT STUDY LIMITS



2.0 Getting the Word Out


2.1 MEETING EMAIL INVITATIONS

An email invitation (Appendix A) was sent to every individual on the project mailing list on June 22, 2022.

2.1.1 ADVERTISEMENTS

Display advertisements announcing the meeting were placed in the following newspapers:

- Peoria Journal Star: June 14 and June 26, 2022
- Henry News-Republican: June 22 and June 29, 2022



**Illinois Department
of Transportation**

PUBLIC MEETING

**IL 18 RIVER BRIDGE PROJECT
MARSHALL AND PUTNAM COUNTIES, ILLINOIS**

DATE: Wednesday, June 29, 2022
TIME: 5:00 – 7:00 P.M.

**LOCATION: Henry United Methodist Church Fellowship Hall
225 Lincoln Street / Henry, Illinois 61537**

The Illinois Department of Transportation (IDOT) has scheduled an open house public meeting to present the range of alternative alignments for the IL 18 River Bridge Project. IDOT is evaluating potential improvements to the IL 18 Bridge over the Illinois River at Henry. The study limits extend along IL 18 from the intersection of School Street and 3rd Street on the west to the intersection of IL 18 and IL 26 on the east. The IL 18 Bridge is a critical transportation link providing access across the Illinois River for the City of Henry, Marshall and Putnam counties, and the surrounding region. The bridge is 88 years old and is approaching the end of its repairable life.

This meeting will provide an update on the status of the IL 18 River Bridge Project; present the range of alternative alignments for the project; and obtain public input on these project alternatives. All persons interested in this project are invited to attend. The meeting will be conducted on an informal basis with project displays and other information available for viewing. IDOT representatives will be available to explain the project and answer questions. No formal presentation will be given.

The public is encouraged to submit comments. Comments can be submitted in writing or electronically. Written correspondence can be mailed to the address listed below.

State COVID guidelines at the time of the meeting will be followed, which may require precautions such as facial coverings, social distancing, and room occupancy limits. The location of the meeting is accessible to persons with disabilities. If special accommodations or assistance are needed, please contact Mr. Travis Wallenfang, IDOT Project Manager, by Friday June 24, 2022 at 309-671-3333, by fax at 309-671-3498, by telecommunications device for the deaf (TTY) at 309-671-3450, or in writing to the address listed below.

Mr. Mark Otten, IDOT Studies and Plans Engineer
Re: IL 18 River Bridge Project
Illinois Department of Transportation
401 N. Main Street
Peoria, Illinois 61602
www.IL18RiverBridgeProject.com

PE-32741401

2.1.2 HOW DID ATTENDEES HEAR ABOUT THE MEETINGS?

One question on the comment form that was distributed at the public meeting asked the attendees to indicate how they heard about the meeting. The results are summarized in Table 1.

TABLE 1 - SUMMARY OF HOW ATTENDEES HEARD ABOUT THE PUBLIC MEETING

Method	Number of Responses
Newspaper Ad	0
Project Email	0
Word of Mouth	1
Social Media	0
Elected Official	0
Other	1

3.0 Public Meeting

3.1 HANDOUTS

When attendees arrived at the public meeting, yard signs directed them to the building entrances and additional signage in the building directed them to the registration table. At the registration table, the Project Team asked attendees to sign in and invited them to take a project newsletter (Appendix B).

3.2 OPEN HOUSE

The open house featured a series of exhibits including a mix of display boards and aerial mapping that allowed attendees to understand the project, the overall process, the purpose and need, the range of reasonable alternatives considered, and potential impacts. Exhibits displayed at the meeting included:

- Study Area Map
- Project Development Process
- Phase I Study Process
- Phase I Project Schedule
- Purpose and Need
- Range of Reasonable Alternatives
- Development of Potential Bridge Replacement Corridors
- What Bridge Replacement Alignment Corridors were Retained After Initial Screening
- Bridge Replacement Alternative Alignments
- Proposed Typical Sections
- Alignment Corridors Plans and Profiles
- Evaluation of Potential Alignment Corridors
 - Potential Impacts in Henry
 - Environmental Impacts
 - Summary of Impacts to Duck Ranch
 - Summary of Estimated Impacts
- Section 106 and Section 4(f)
- Land Acquisition
- Alternatives to be Carried Forward – Next Steps
- Public Involvement Activities
- Opportunities for Participation

These exhibits are located in Appendix C.

4.0 Comments Received

The Project Team encouraged participants to provide comments on the information presented at the meeting and to ask questions. Comments forms were available at the meeting. They were asked to either leave the form in the comment box at the meeting or to mail them to the Project Team at the address on the comment form. Self-addressed envelopes were provided. The comment period ended on July 27, 2022.

4.1 COMMENT FORMS RECEIVED AT THE MEETING

The comment forms distributed at the meeting included five main questions as well as an area to provide contact information. One comment form was received at the meeting (Appendix D). Listed below are the responses received to the five questions asked on the comment form.

QUESTION 1:

The purpose of this meeting is to present the Range of Alternatives for the project and to obtain your input on these alternatives. Please share your thoughts on the alternatives and the evaluation process presented this evening.

Responses to Question 1:

- I appreciate the thoroughness of the presentation. Many questions I had were answered through the story boards.
- I was curious if the clearance from mean water level will increase to allow larger vessels to pass or to allow more during flood periods to allow traffic to continue.
- I believe the group working on this project has done a great job and that the evaluation process has been thorough and logical.

QUESTION 2:

The project team will be selecting a Preferred Alternative following this meeting. Do you see any advantages or disadvantages to either the Corridor 3 Alignment or the Corridor 5 Alignment? If so, what are these advantages and disadvantages?

Responses to Question 2:

- Both of these corridors are essentially equal. That being said, if Front Street is blocked I think the Corridor 5, which gives more room for making access and development as well as lower cost overall is the better of the two choices.

QUESTION 3:

How did you find out about this public meeting? Please check all that apply.

Responses to Question 3:

TABLE 3 – SUMMARY OF HOW PARTICIPANTS FOUND OUT ABOUT THE MEETING

Source	Occurrences
Elected Official	
Project Email	
Project Website	
Word of Mouth	●
Newspaper Advertisement	
Other: Social Media/Facebook	●

QUESTION 4:

What information did you hope to gather from this meeting? Please provide any thoughts you have on the helpfulness of information presented, meeting format, meeting venue, publicity efforts, or other meeting-related feedback.

Responses to Question 4:

- Corridor alternatives. Approach upgrade. Shoulder size for bicycles and ped access.

QUESTION 5:

Additional comments regarding the project and/or today’s public meeting.

Responses to Question 5:

- Thank you.

4.2 COMMENTS RECEIVED ON THE WEBSITE

Four comments were received at the project website during the public meeting comment period (ending July 27, 2022). All comments received are included in Appendix D

5.0 Next Steps

The project team responded to each comment (if contact information was provided) with a letter addressing the questions, comments, and concerns stated (Appendix E). The information gathered at the public meeting and presented in this document will be incorporated in the environmental document. Input regarding the format and content of the meetings and the effectiveness of various communication strategies will be used to improve future public meetings and overall project communication.

6.0 Appendices

Appendix A – Public Meeting Email Invitation

Appendix B – Meeting Handout/Newsletter #2

Appendix C – Meeting Exhibits

Appendix D – Comment Forms and Website Comments Received

Appendix E – Responses to Submitted Comments

Appendix A – Public Meeting Email Invitation

IL 18 RIVER BRIDGE PROJECT

You're Invited

Open House Public Meeting to Present the Range of Alternatives

The Illinois Department of Transportation is evaluating potential improvements to the IL 18 Bridge over the Illinois River at Henry.

The study limits extend along IL 18 from the intersection of School Street and 3rd Street on the west to the intersection of IL 18 and IL 26 on the east. The IL 18 Bridge is a critical transportation link providing access across the Illinois River for the City of Henry, Marshall and Putnam counties, and the surrounding region. The bridge is 88 years old and is approaching the end of its repairable life.

This meeting will provide an update on the status of the IL 18 River Bridge Project; present the range of alternative alignments for the project; and obtain public input on these project alternatives. All persons interested in this project are invited to attend. The meeting will be conducted on an informal basis with project displays and other information available for viewing. IDOT representatives will be available to explain the project and answer questions. No formal presentation will be given.

The public is encouraged to submit comments.

Open House

IL 18 RIVER BRIDGE PROJECT

Wednesday June 29, 2022
5 p.m. – 7 p.m.

Henry United Methodist Church Fellowship Hall

225 Lincoln Street
Henry, Illinois 61537

Project Website: www.IL18RiverBridgeProject.com

For more information email us at: Contact@IL18RiverBridgeProject.com

The location of the meeting is accessible to persons with disabilities. If special accommodations or assistance are needed, please contact Mr. Travis Wallenfang, IDOT Project Manager, by Friday, June 24, 2022 at **309-671-3333**, by fax at **309-671-3498**, by telecommunications device for the deaf (TTY) at **309-671-3450**.

*State COVID guidelines at the time of the meeting will be followed, which may require precautions such as facial coverings, social distancing, and room occupancy limits.

Appendix B – Meeting Handout/Newsletter #2



Second Public Meeting Scheduled For IL 18 River Bridge Project

A second Public Meeting will be held on Wednesday June 29, 2022 to review potential alternatives and receive public comment as part of the IL 18 River Bridge Project.

Introduction

The existing IL 18 Bridge over the Illinois River at the city of Henry was constructed in 1934. Due to the age and condition of the bridge, the Illinois Department of Transportation (IDOT) District 4 is evaluating potential improvement options for the bridge. The project study limits extend from the intersection of IL 18 and 3rd Street in Henry on the west to the intersection of IL 18 and IL 26 on the east. The IL 18 River Bridge Project study includes detailed evaluation of potential improvements to IL 18 and the bridge over the Illinois River.

Public Meeting #2

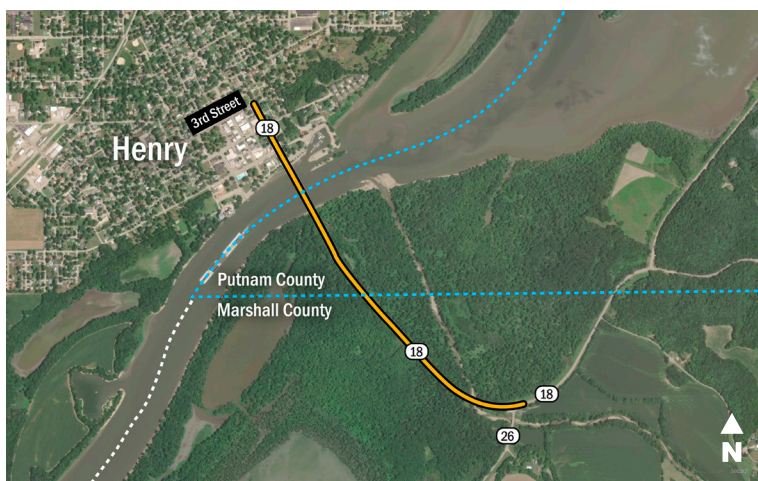
June 29, 2022
5 – 7 p.m.



Henry United Methodist
Church Fellowship Hall

225 Lincoln Street
Henry, IL 61537

About the Study

The purpose of the project is to accommodate IL 18 traffic through the project area across the Illinois River on a transportation system that is structurally sound, meets current design standards, provides a safe crossing for the public, reduces flooding over IL 18, supports connectivity needs, and meets the need of river traffic.



-  Project Study Limits
-  County Border

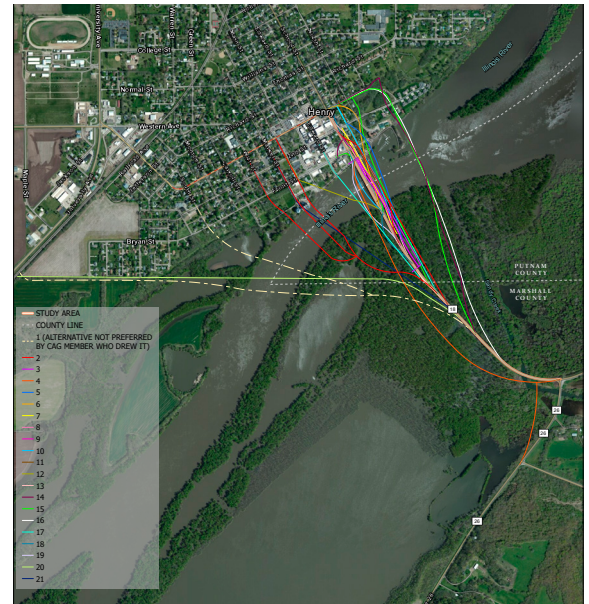
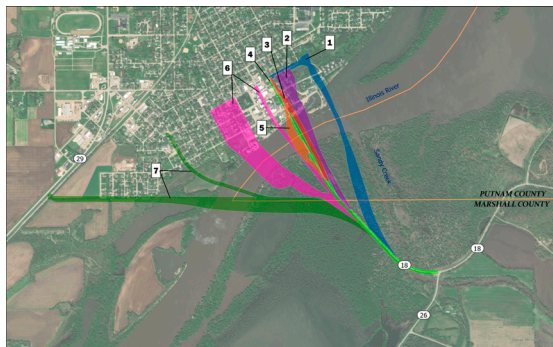
Range of Reasonable Alternatives

The following alternatives were considered for the IL 18 River Bridge Project:

- Do Nothing (No-Build),
- Reconstruction/Rehabilitation,
- Build a new bridge and retain the existing bridge, and
- Bridge replacement (build a new bridge with associated roadway improvements).

Development of Potential Bridge Replacement Alignment Corridors

At the June 2021 Community Advisory Group (CAG) meeting, CAG members were asked to identify potential alignments for a new bridge location. The CAG has local knowledge of the community and represents the stakeholders in the community and surrounding region. The CAG developed 31 alignments that were then grouped into 7 corridors.



Initial Screening of Alternatives

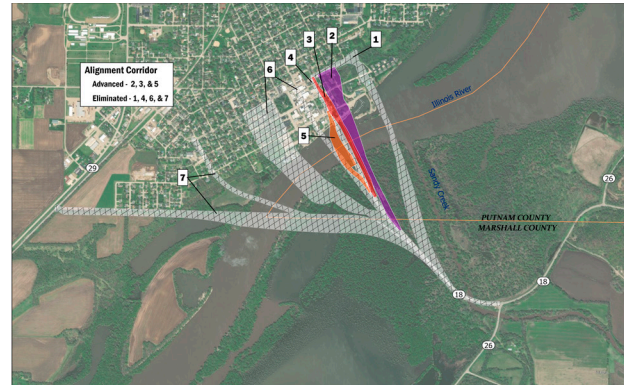
Each of the alternatives were initially screened to determine if they would meet the project’s purpose and need or if they had a fatal flaw regarding design, feasibility, environmental impacts, and/or community concerns. If the alternative did not meet the project’s purpose and need, it was dismissed from further evaluation. If the alternative had a fatal flaw, it was also dismissed from further evaluation.

Do Nothing (No-build)	Reconstruction / Rehabilitation	Build a New Bridge and Retain the Existing Bridge	Bridge Replacement
<ul style="list-style-type: none"> • No improvements other than routine and emergency repairs and maintenance • REMAINS: No-build carried forward as a baseline comparison for other alternatives 	<ul style="list-style-type: none"> • Replacement of the existing bridge deck • Could include work on the piers and foundation • DISMISSED: Does not meet project Purpose & Need <ul style="list-style-type: none"> • Does not address the narrow lanes • Does not address zero width shoulders 	<ul style="list-style-type: none"> • Existing bridge would accommodate one direction of travel and new bridge would accommodate the other direction of travel • DISMISSED: Not a reasonable use of funds to use new bridge for one lane of travel while also expending resources to rehabilitate and maintain the existing bridge for the opposite direction of travel 	<ul style="list-style-type: none"> • Complete replacement of the existing bridge on either the existing alignment or a new alignment • New bridge meets current design standards • Roadway improvements east of the river to address roadway flooding • REMAINS: Meets Purpose & Need <ul style="list-style-type: none"> • 7 potential alignment corridors initially evaluated

Following the initial screening of alternatives, the No-Build and Bridge Replacement alternatives were retained for additional development and evaluation.

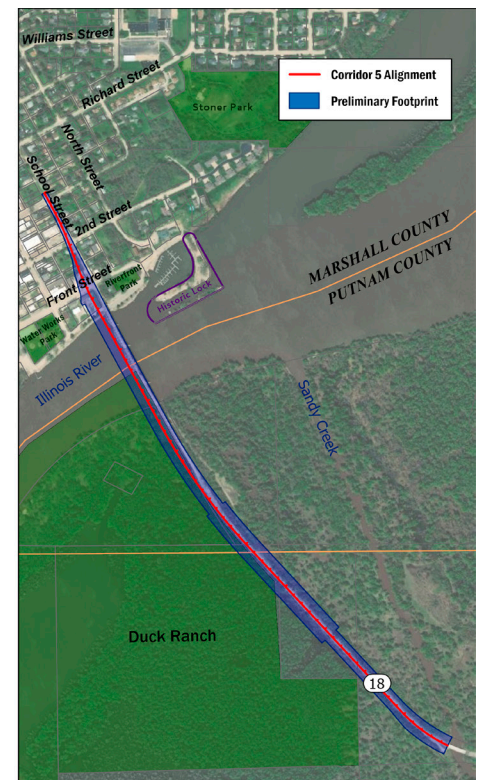
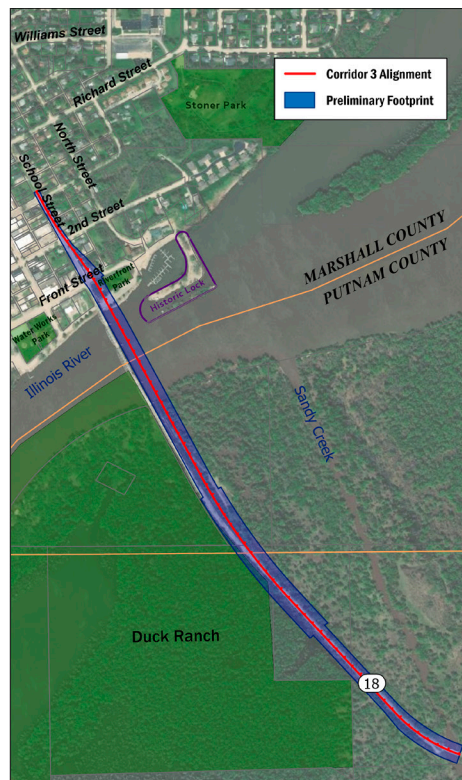
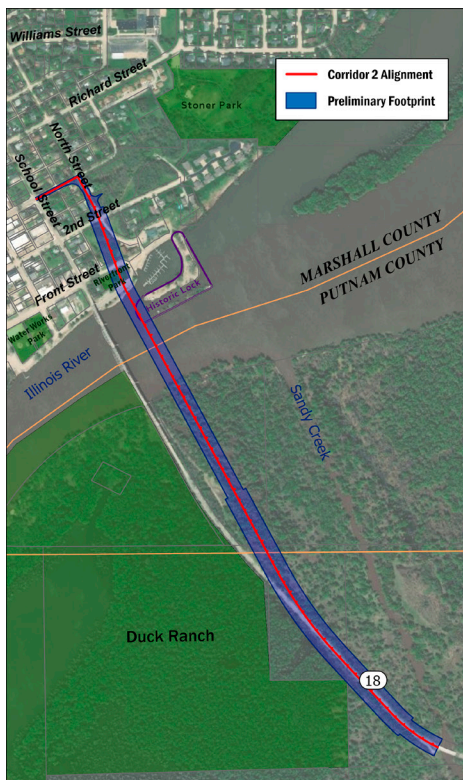
Bridge Replacement Alignment Corridors Retained after Initial Screening

The initial screening was also used to eliminate some of the corridors from consideration. The seven potential alignment corridors were evaluated to determine if they had any fatal flaws based on community issues, design considerations, and input from the CAG. Based on this evaluation alignment corridors 1, 4, 6, and 7 were eliminated from further consideration. Alignment corridors 2, 3, and 5 were advanced to the next step where potential engineering alignments and profiles were developed within each corridor.



Bridge Replacement Alternative Alignments

After the three corridors were identified as the potential locations for a new bridge as part of the Bridge Replacement Alternative, roadway/bridge alignments were developed for each taking into account horizontal and vertical design criteria, roadway typical sections, local road connectivity, expected river navigation requirements of the U.S. Coast Guard, and land acquisition constraints. The figure below shows the roadway alignment developed for each of the three corridors.



Additional Evaluation and Screening

Additional evaluation and screening were performed on these alternatives following the development of engineering alignments and profiles. This evaluation focused on community issues, environmental impacts, and cost.



Based on the results of the additional evaluation and screening, the Corridor 2 Alignment was eliminated from further consideration due to having the most impacts to Section 106 and Section 4(f) resources and having an estimated construction cost that is 30 to 34 percent higher than the other two Bridge Replacement alternatives. The Corridor 2 alignment requires a longer bridge and a wider navigational channel, which are the primary drivers for its additional cost.

Alternatives to be Carried Forward for Detailed Evaluation

Based on the evaluation completed for this project, the following are the alternatives to be carried forward for detailed evaluation:

- No-Build Alternative
- Bridge Replacement Alternative
 - Corridor 3 Alignment
 - Corridor 5 Alignment

Screening Criteria	Alternative			
	No-Build	Bridge Replacement		
		Corridor 2 Alignment	Corridor 3 Alignment	Corridor 5 Alignment
Community Issues of Importance				
Maintains traffic through downtown Henry	Yes	Yes	Yes	Yes
Existing bridge can remain open during construction	N/A	Yes	Yes	Yes
Maintains existing intersections	Yes	1 intersection eliminated	1 intersection eliminated	1 intersection eliminated
Maintains access to existing residences and businesses	Yes	Access along North St. affected	Access along Front St. affected	Access along Front St. affected
Maintains access to riverfront and recreational use	Yes	Yes	Yes	Yes
Preserves historic features of the city	Yes	No	Yes	Yes
Environmental Impacts				
Right-of-way	0 acres	33 acres	9 acres	10 acres
Residential Displacements	0	5	7	4
Commercial Displacements	0	0	1	2
Historic Section 106/ 4(f) Resources	0	2 (IL 18 Bridge, Historic Lock)	1 (IL 18 Bridge)	1 (IL 18 Bridge)
Recreational Section 4(f) Resources	0	2 (Duck Ranch, Riverfront Park)	1 (Duck Ranch)	1 (Duck Ranch)
Floodway	0.0 acres	12.6 acres	12.1 acres	11.2 acres
Floodplain	0.0 acres	0.0 acres	0.0 acres	0.0 acres
Wetlands	0.0 acres	7.7 acres	3.8 acres	4.2 acres
Forested Habitat	0.0 acres	12.3 acres	8.5 acres	6.8 acres
Special Waste Sites	0	3	5	7
Farmland	0 acres	0 acres	0 acres	0 acres
Water Supply Wells	0	0	0	0
Environmental Justice Communities	0	0	0	0
Section 6(f)/OSLAD	0	0	0	0
Threatened/Endangered Species	0	0	0	0
Cost				
Estimated Construction Cost	N/A	\$105.8M	\$81.1M	\$79.0M
Alternative Carried Forward or Eliminated	Carried Forward	Eliminated	Carried Forward	Carried Forward

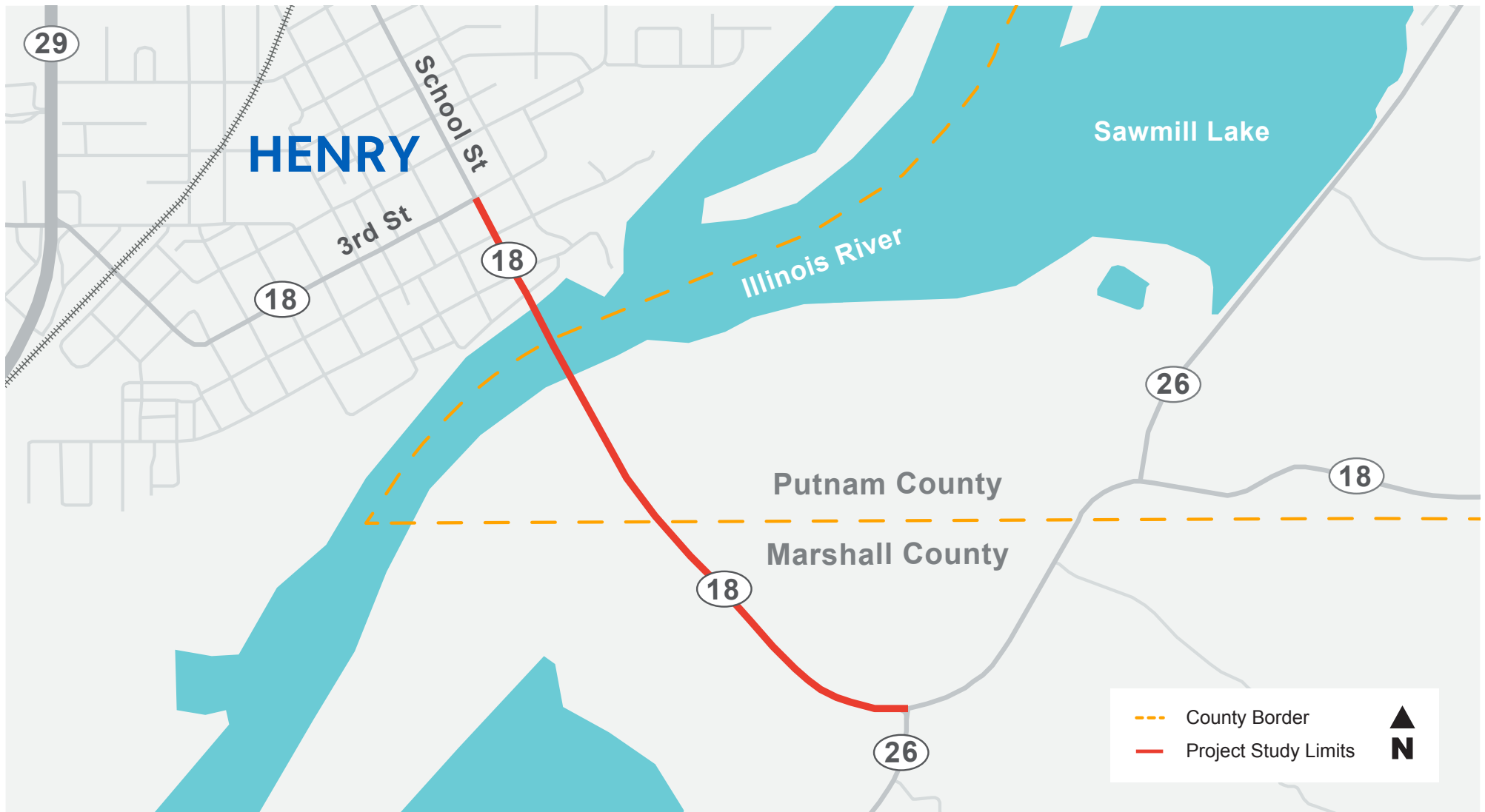
We encourage and welcome **Public Comments** throughout the project. At Public Meeting #2, there will be comment sheets available for attendees to fill out or to mail back to the project study team. The public can also send comments to Contact@IL18RiverBridgeProject.com or fill out the online comment form at www.IL18RiverBridgeProject.com. When the environmental document is published, a formal public comment period will be held and will include a public hearing.

Appendix C – Meeting Exhibits

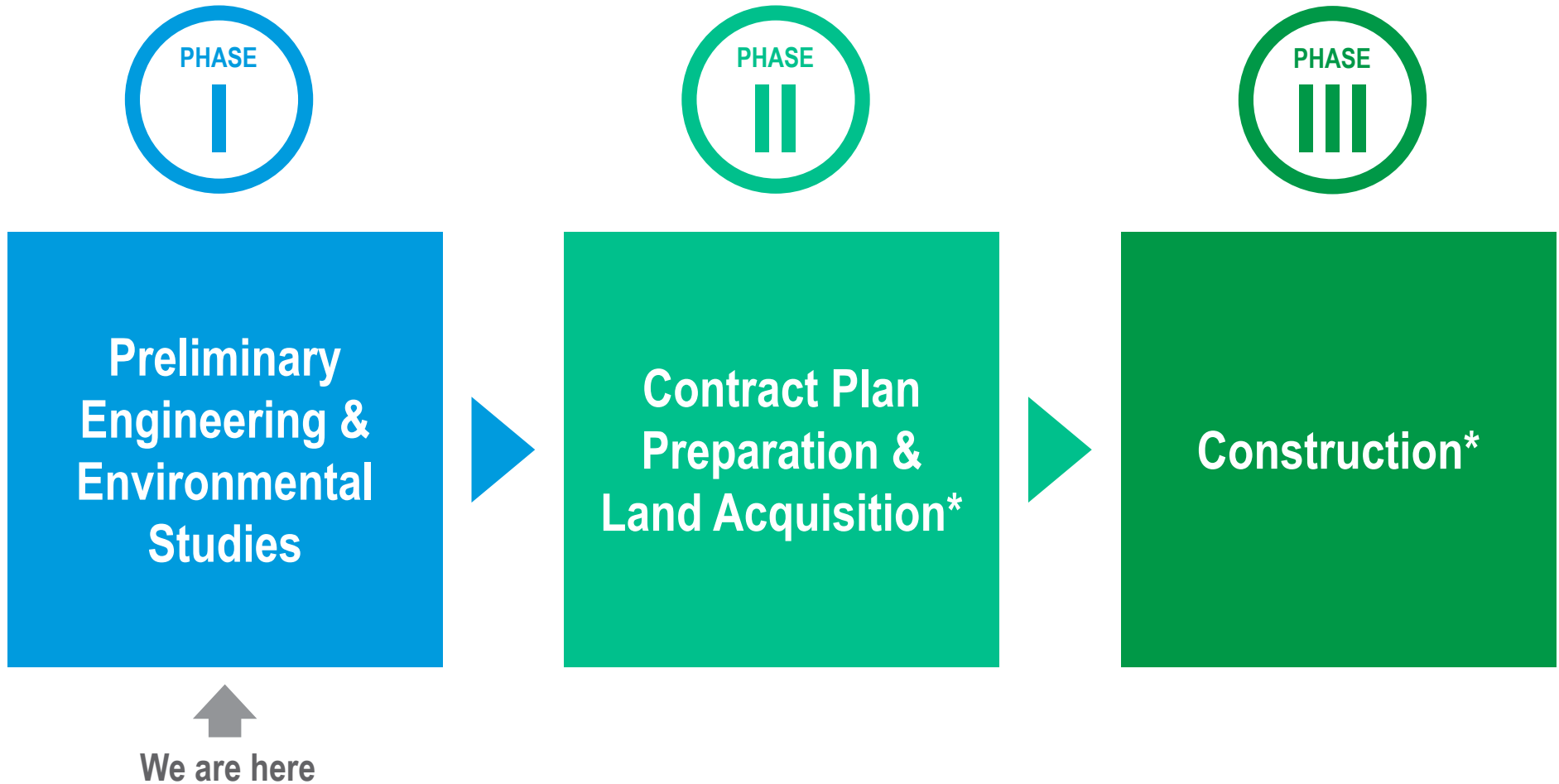
IL 18 RIVER BRIDGE PROJECT

Study Area Map

Study Limits: Intersection of IL 18/3rd Street in Henry to Intersection of IL 18/IL 26



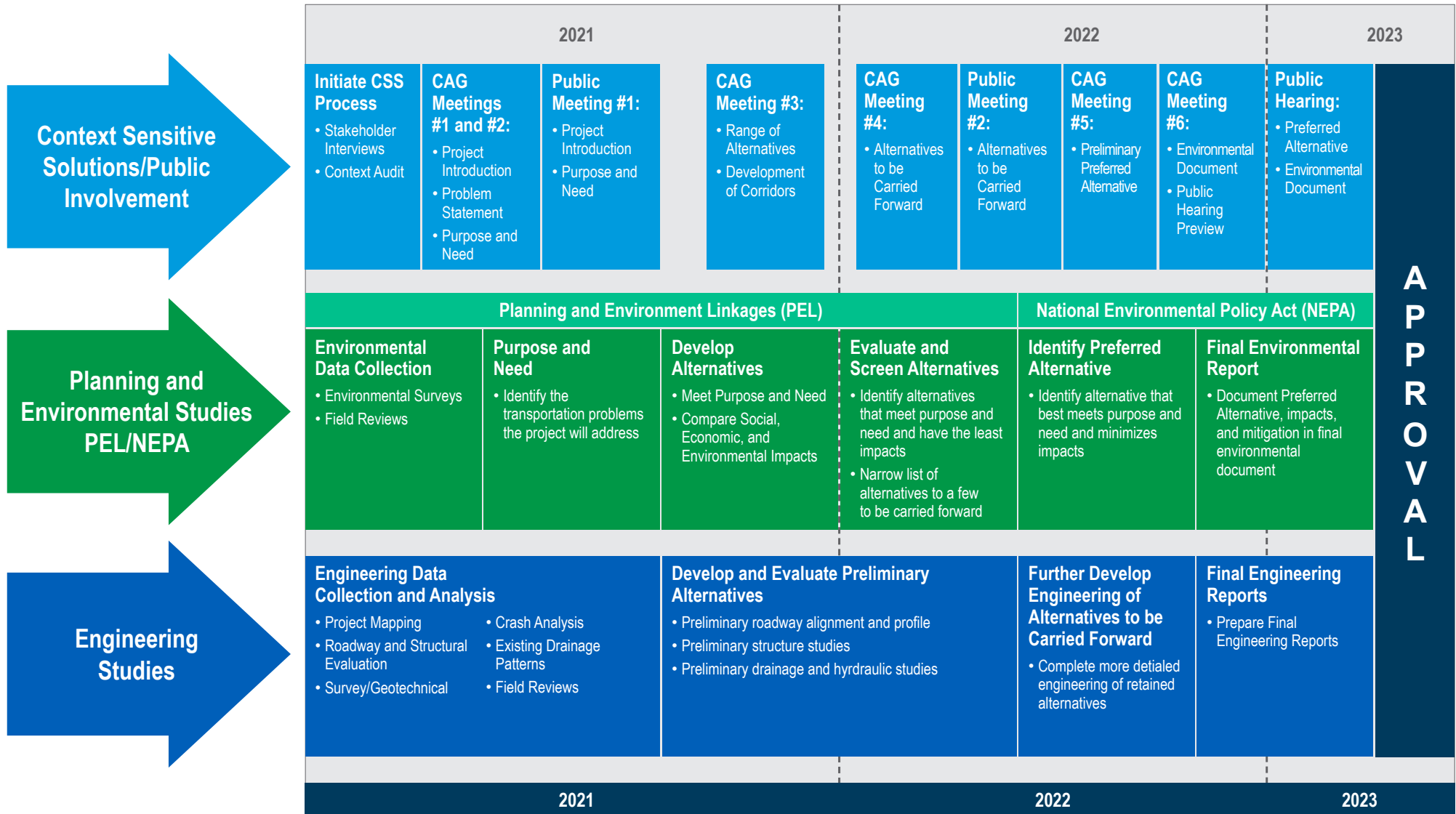
Project Development Process



*Currently included in IDOT's Fiscal Year 2022 – 2027 Multi-year program

IL 18 RIVER BRIDGE PROJECT

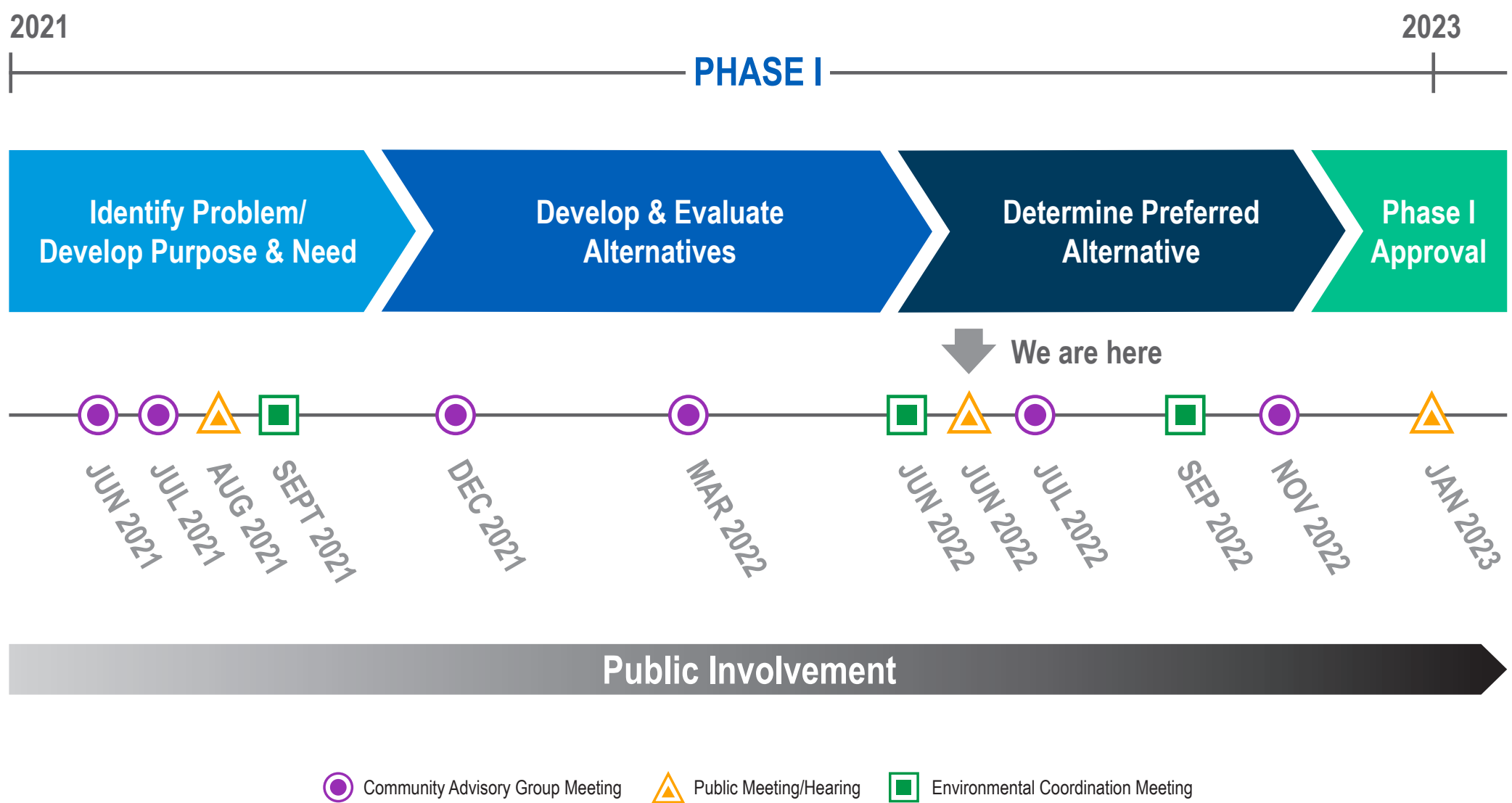
Phase I Study Process



APPROVAL

IL 18 RIVER BRIDGE PROJECT

Phase I – Estimated 2-year Process



Purpose and Need

Purpose

- The purpose of the project is to accommodate IL 18 traffic through the project area and across the Illinois River on a transportation system that is structurally sound, meets current design standards, provides a safe crossing for the public, reduces flooding over IL 18, supports regional connectivity needs, and meets the needs of river traffic.

Need

- **Structural Integrity** – Condition of the superstructure and substructure
- **Design Standards** – Narrow roadway deck does not meet current standards
- **Safety Concerns** – Narrow roadway increases likelihood of crashes
- **Regional Connectivity** –
 - Essential link connecting Marshall and Putnam counties and surrounding region
 - Flooding often results in roadway and bridge closures and adverse travel time



Range of Reasonable Alternatives

Do Nothing (No-build)

- No improvements other than routine and emergency repairs and maintenance
- **REMAINS: No-build carried forward as a baseline comparison for other alternatives**

Reconstruction / Rehabilitation

- Replacement of the existing bridge deck
- Could include work on the piers and foundation
- **DISMISSED: Does not meet project Purpose & Need**
 - Does not address the narrow lanes
 - Does not address zero width shoulders

Build a New Bridge and Retain the Existing Bridge

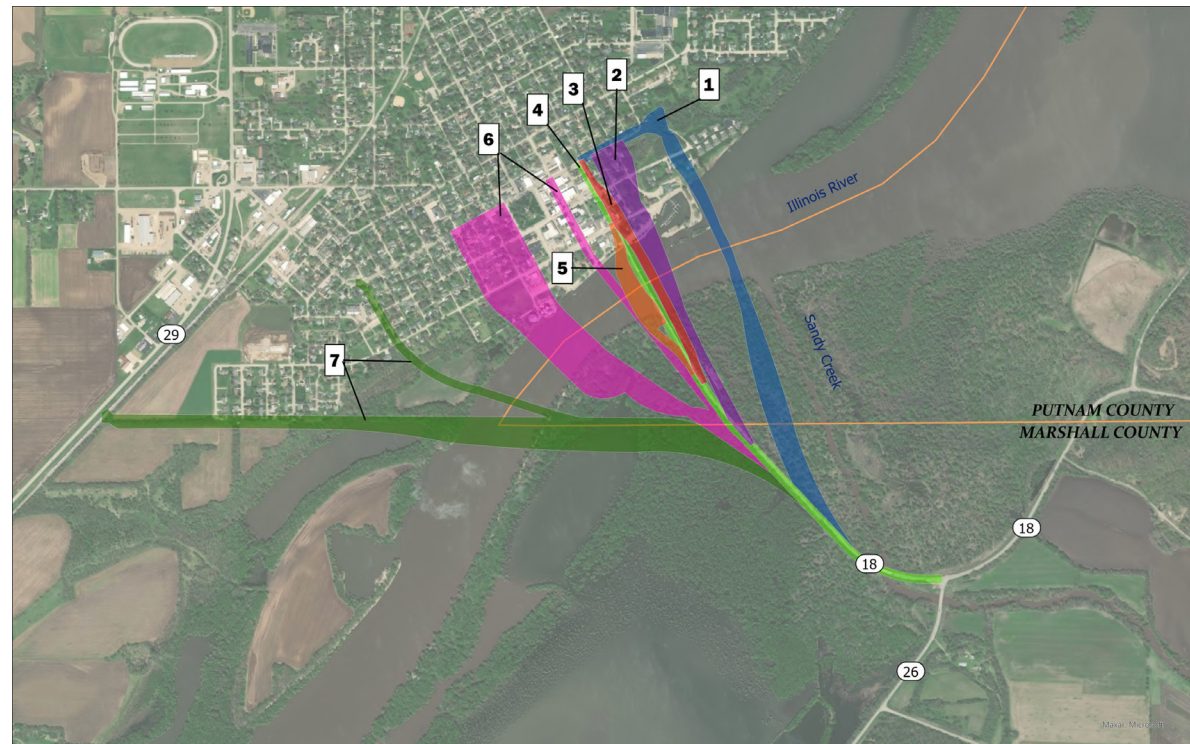
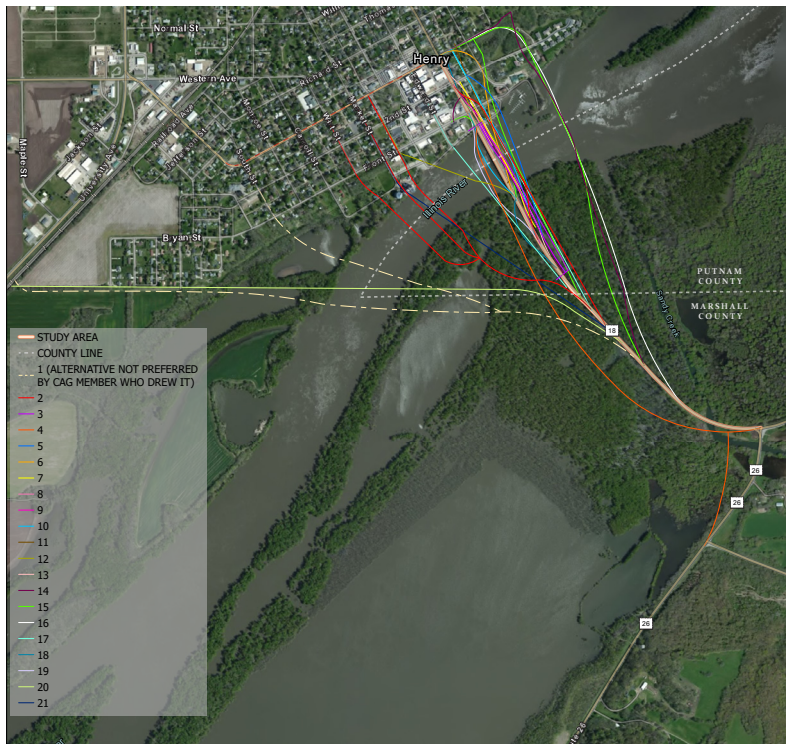
- Existing bridge would accommodate one direction of travel and new bridge would accommodate the other direction of travel
- **DISMISSED: Not a reasonable use of funds to use new bridge for one lane of travel while also expending resources to rehabilitate and maintain the existing bridge for the opposite direction of travel**

Bridge Replacement

- Complete replacement of the existing bridge on either the existing alignment or a new alignment
- New bridge meets current design standards
- Roadway improvements east of the river to address roadway flooding
- **REMAINS: Meets Purpose & Need**
 - 7 potential alignment corridors initially evaluated

Development of Potential Bridge Replacement Alignment Corridors

- At the June 2021 CAG meeting, CAG members identified potential alignments for a new bridge location
- 31 alignments were grouped into seven corridors



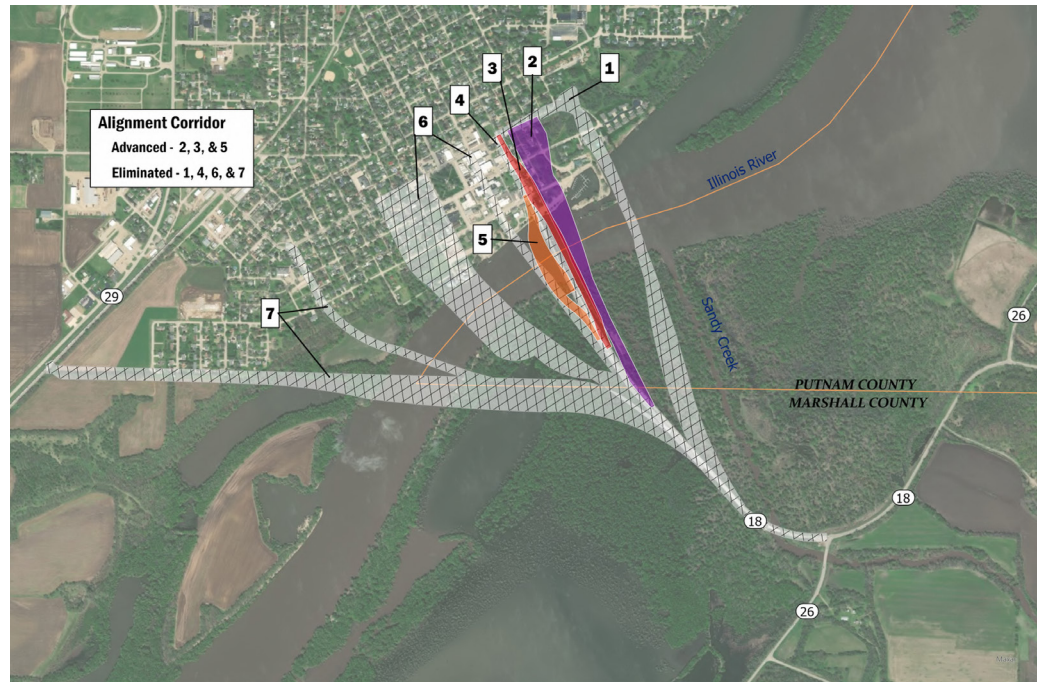
What Bridge Replacement Alignment Corridors were Retained After Initial Screening

- Initial screening was used to eliminate some of the corridors from consideration along with consensus from the CAG

Evaluation Criteria	Corridors						
	1	2	3	4	5	6	7
Purpose and Need							
Structural Integrity	✓	✓	✓	✓	✓	✓	✓
Design Standards	✓	✓	✓	✓	✓	✓	✓
Safety	✓	✓	✓	✓	✓	✓	✓
Regional Connectivity	✓	✓	✓	✓	✓	✓	✓
Community Feedback							
Bridge traffic critical to downtown businesses	+	+	+	+	+	-	-
Bridge should remain open during construction	+	+	+	-	+	+	+
Don't wall off/maintain existing intersections	-	-	-	-	-	-	+
Maintain access to existing residences and businesses	-	-	-	-	-	-	+
Don't impact recreation use of the river	=	=	=	=	=	=	=
Preserve historic features of the city	=	=	=	=	=	=	=
Design Considerations							
Section 4(f)	+	=	+	+	=	-	-
Historic Resources	-	-	=	=	=	=	=
Cost	-	=	=	=	=	=	-
CAG Input							
Corridors Recommended for Elimination	✗			✗		✗	✗

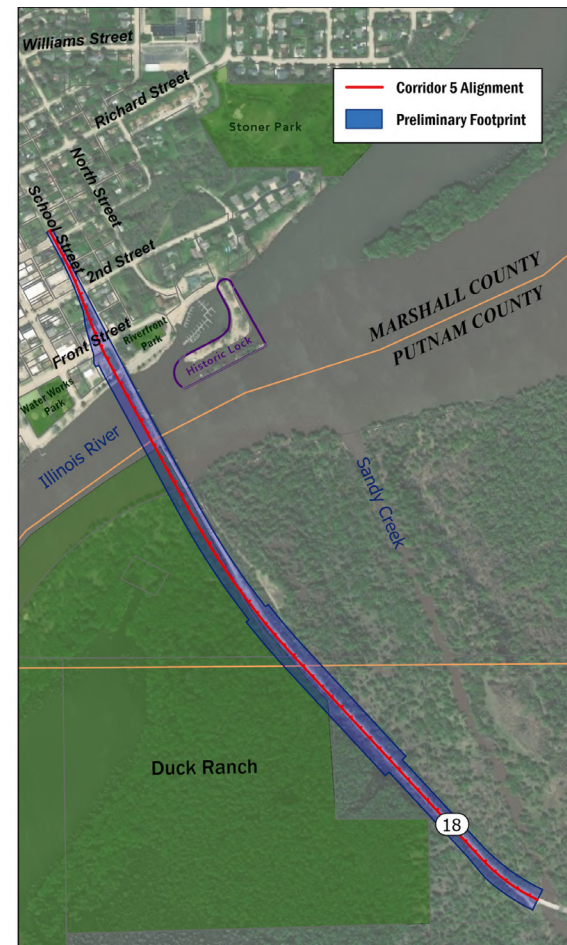
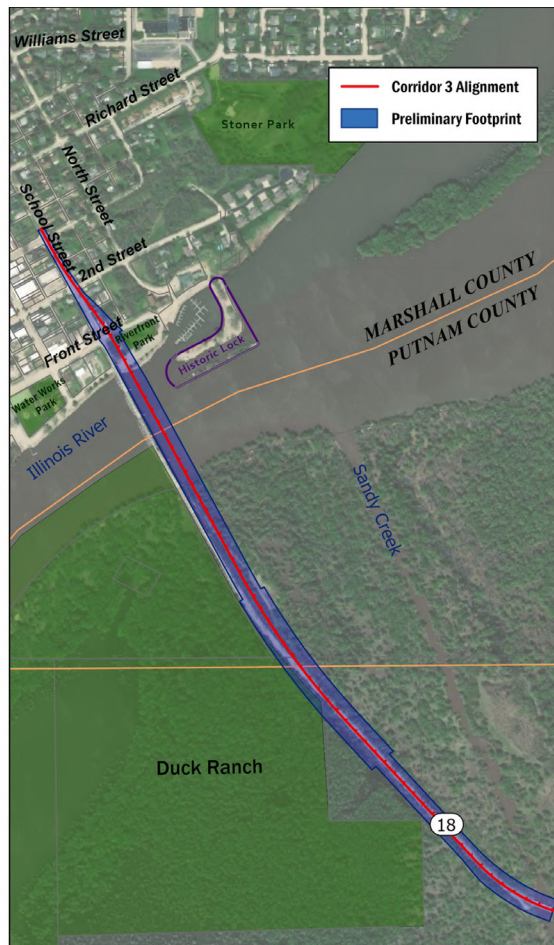
- Least favorable
 = Neutral
 + Most favorable

Alignment Corridors Retained



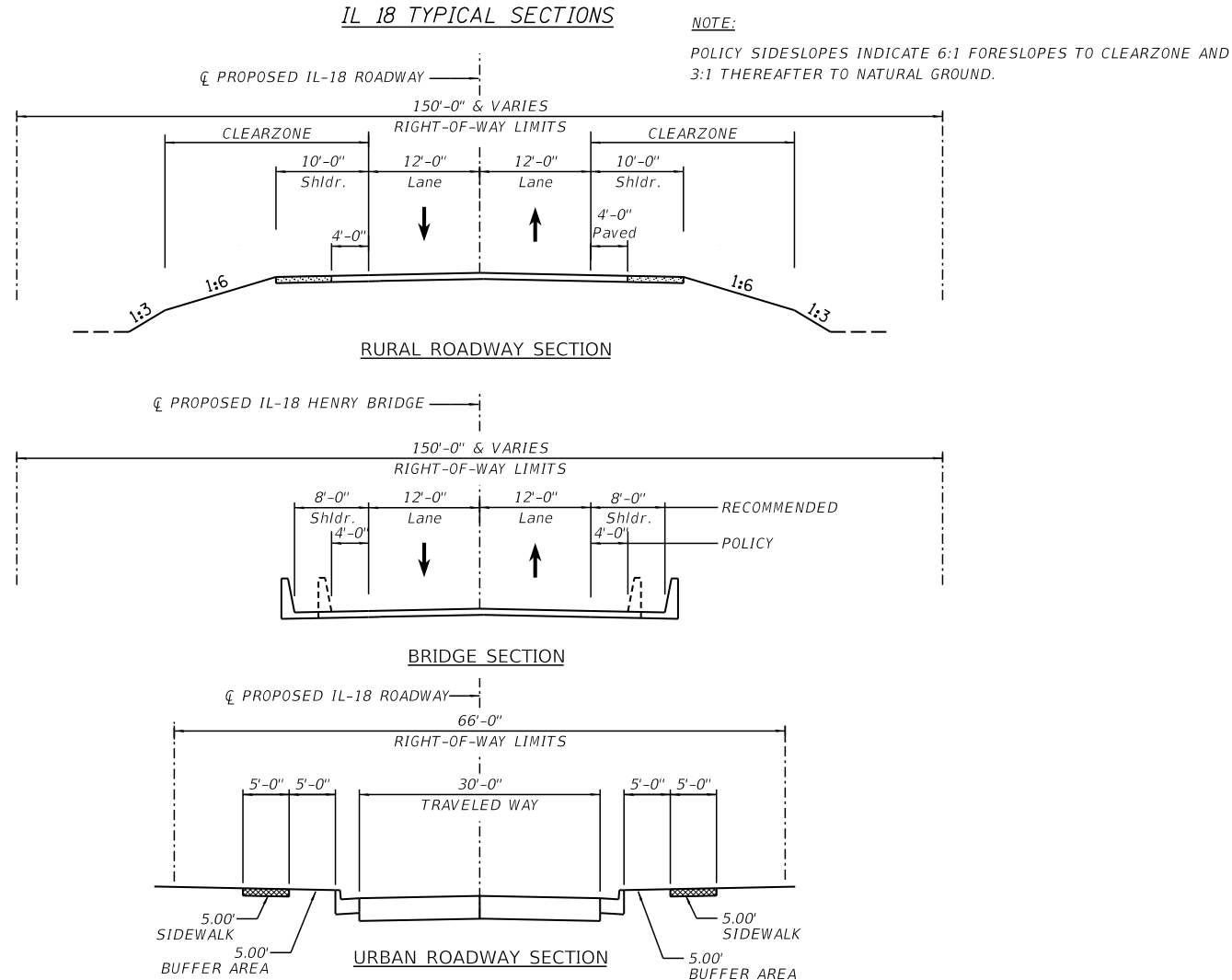
Bridge Replacement Alternative Alignments

- Remaining corridors were developed further to compare anticipated impacts.
- Development was iterative accounting for engineering constraints, community input (via the CAG), and feedback from other government entities.



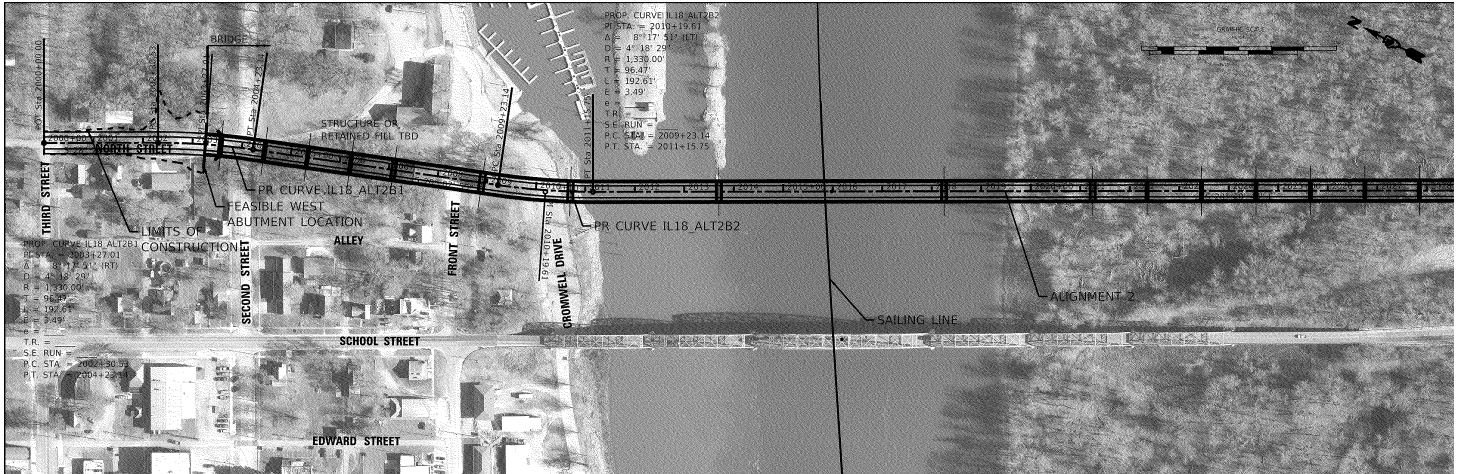
Proposed Typical Sections

- Typical sections reflect current design standards
- Along the bridge 8-foot wide shoulders provided that exceed policy requirements to accommodate large farm equipment, provide a refuge for stalled vehicles, traffic control flexibility for future bridge maintenance and improves safety for non-motorized traffic.



Alignment Corridors Plans

Corridor 2:



Corridor 3:

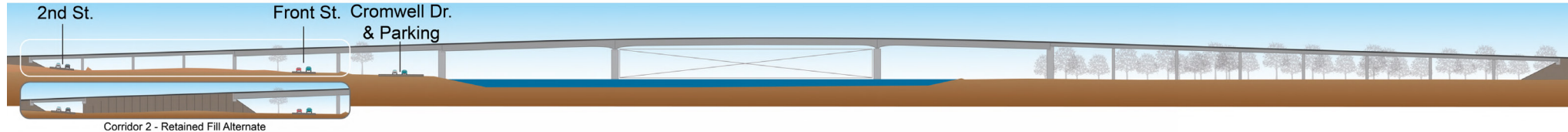


Corridor 5:



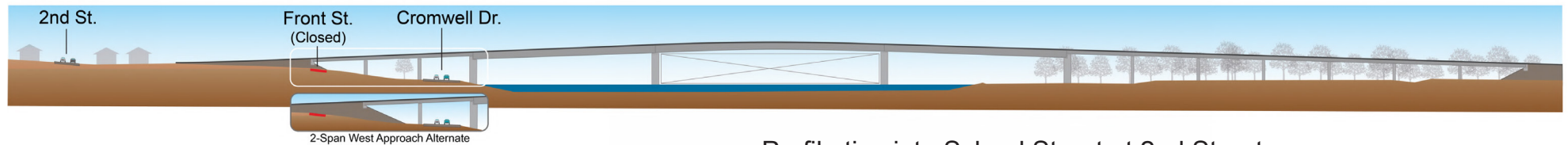
Alignment Corridors Profiles

Corridor 2:



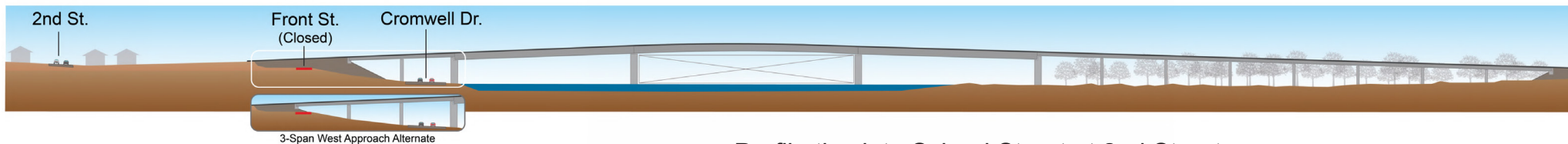
- Intersects at 3rd Street
- 3% approach grades at bridge
- Bridge spans Cromwell Drive, Front Street, and 2nd Street

Corridor 3:



- Profile ties into School Street at 2nd Street
- 3% - 4% approach grades to bridge
- Bridge spans Cromwell Drive but blocks Front Street

Corridor 5:



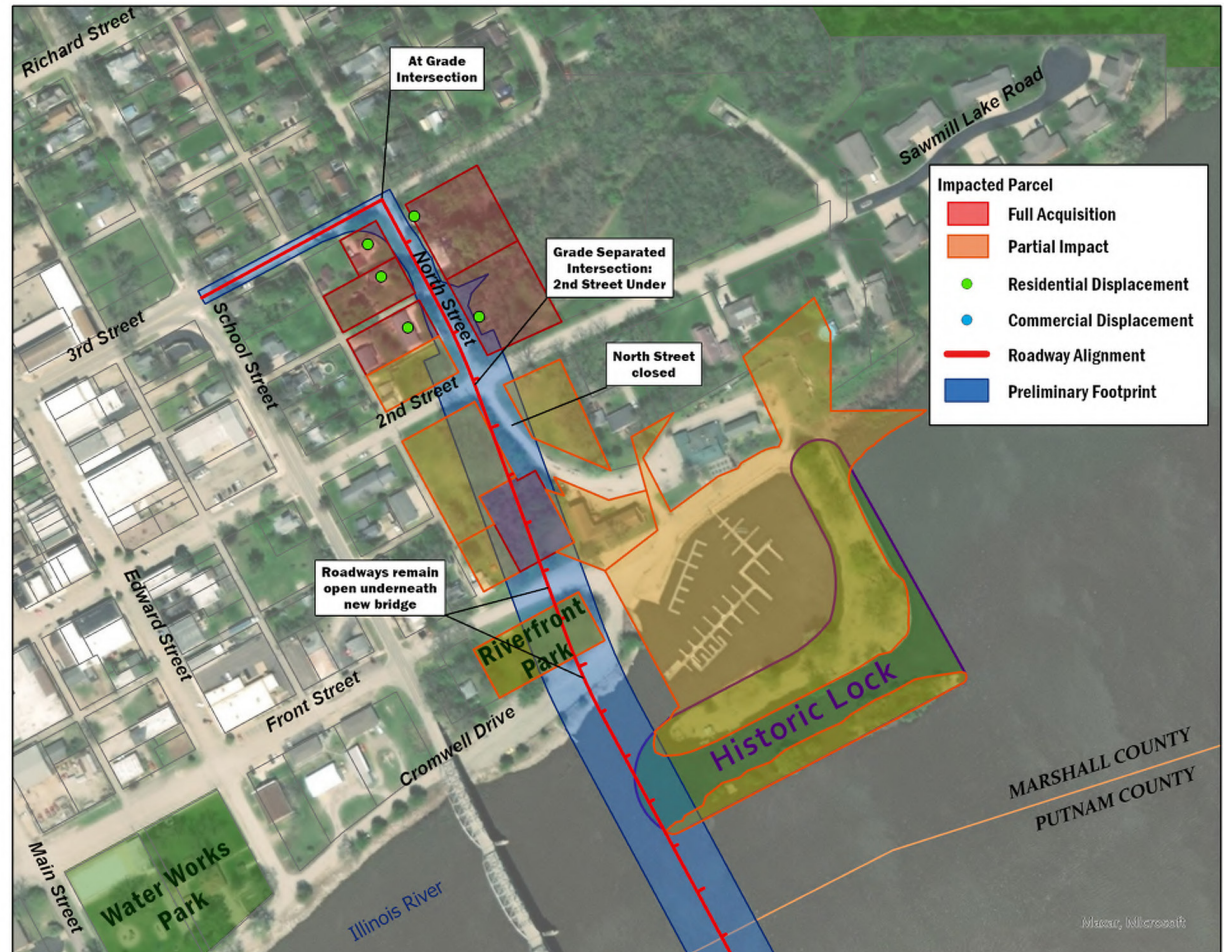
- Profile ties into School Street at 2nd Street
- 3% - 4% approach grades to bridge
- Bridge spans Cromwell Drive but blocks Front Street

Evaluation of Potential Alignment Corridors

Potential Impacts in Henry

Corridor 2 Alignment

- Street Network
 - Cromwell Drive spanned
 - Front Street spanned
 - 2nd Street spanned
 - North Street from 3rd Street to riverfront eliminated
- 13 Parcels affected
- 5 Residential Displacements
- 0 Commercial Displacements
- Revised based on CAG feedback to avoid the hotel

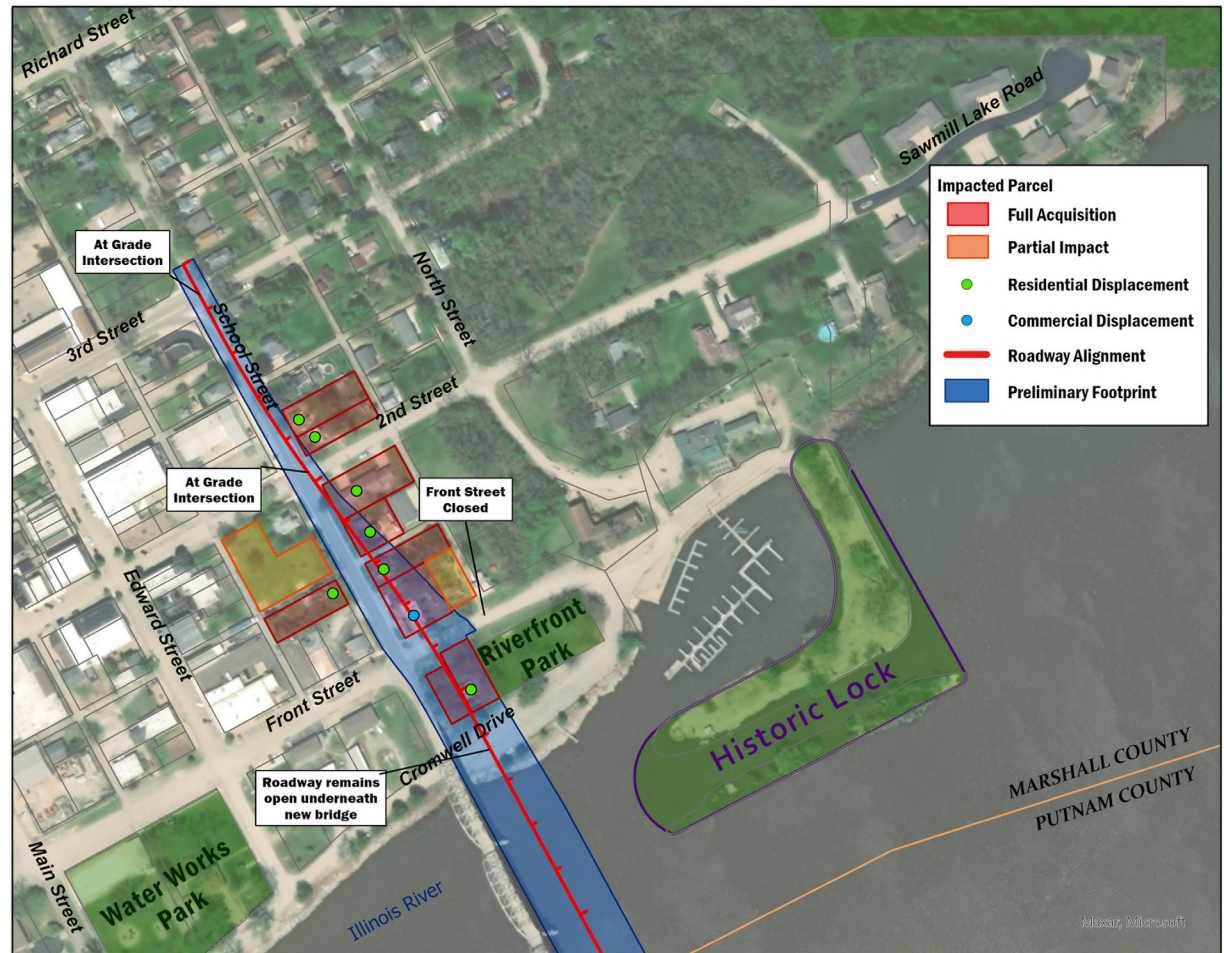


Evaluation of Potential Alignment Corridors

Potential Impacts in Henry

Corridor 3 Alignment

- Street Network
 - Cromwell Drive spanned
 - Front Street closed at new IL 18 roadway
 - New IL 18 roadway ties down at 2nd Street
 - Between Front and 2nd Streets, access eliminated on south side of new IL 18
- 10 Parcels affected
- 7 Residential Displacements
- 1 Commercial Displacements

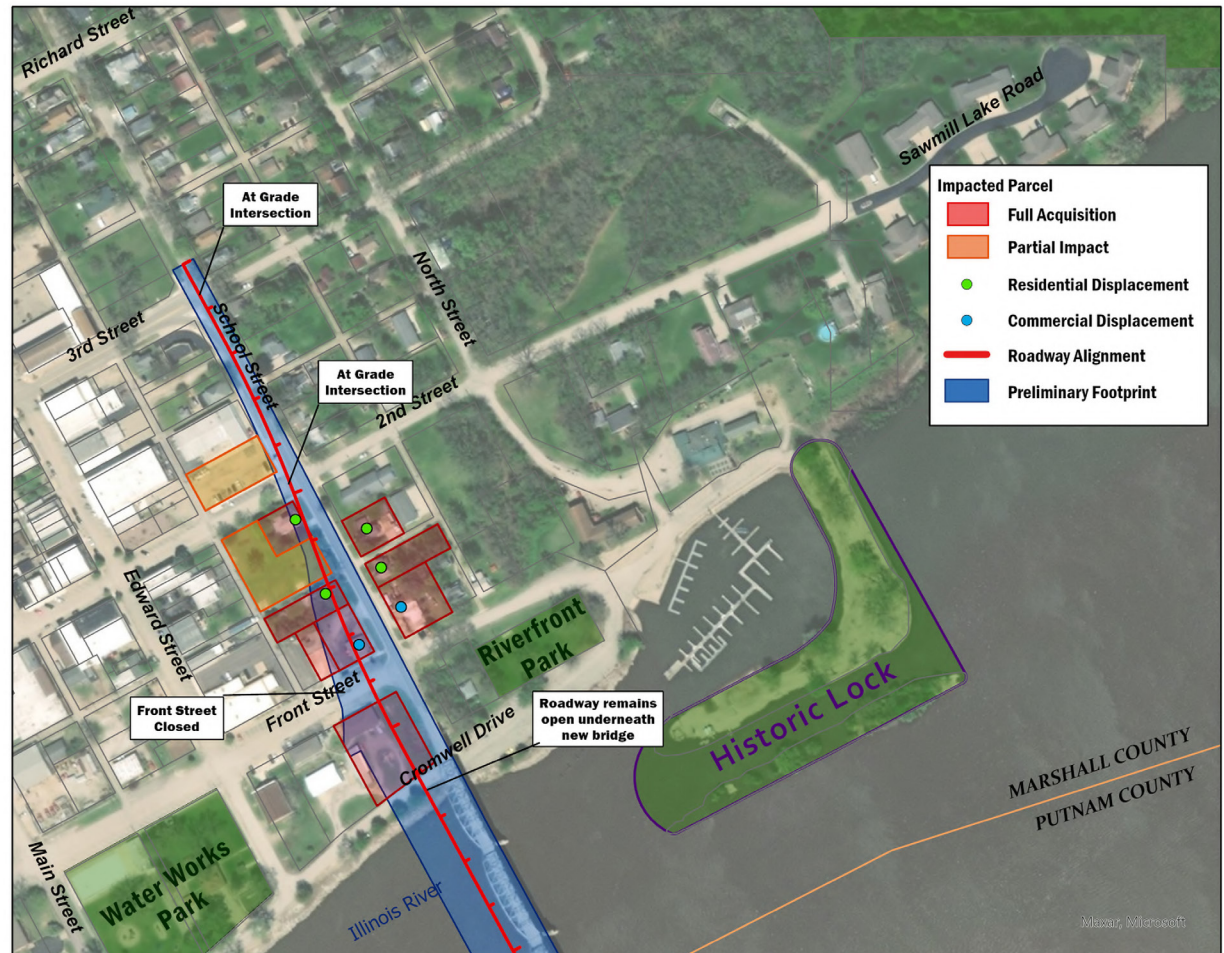


Evaluation of Potential Alignment Corridors

Potential Impacts in Henry

Corridor 5 Alignment

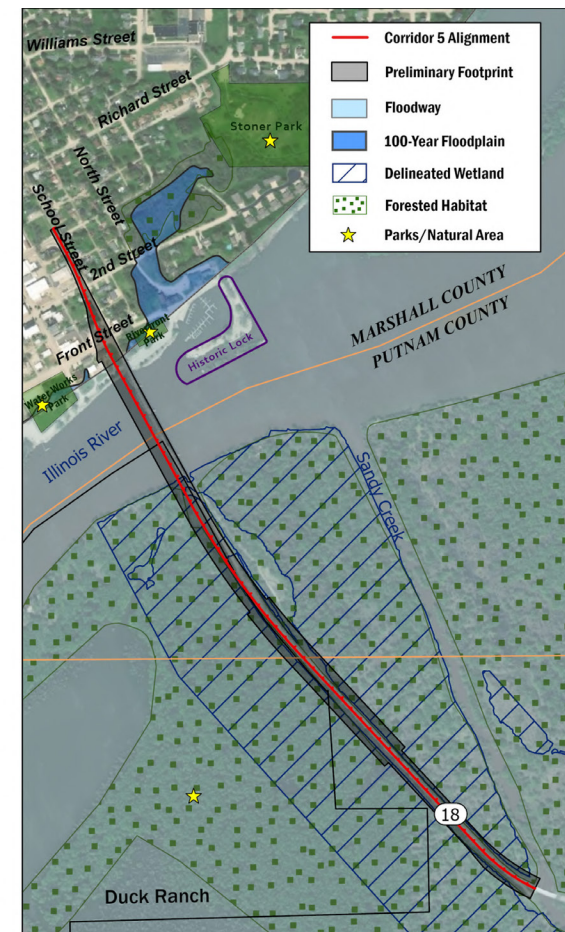
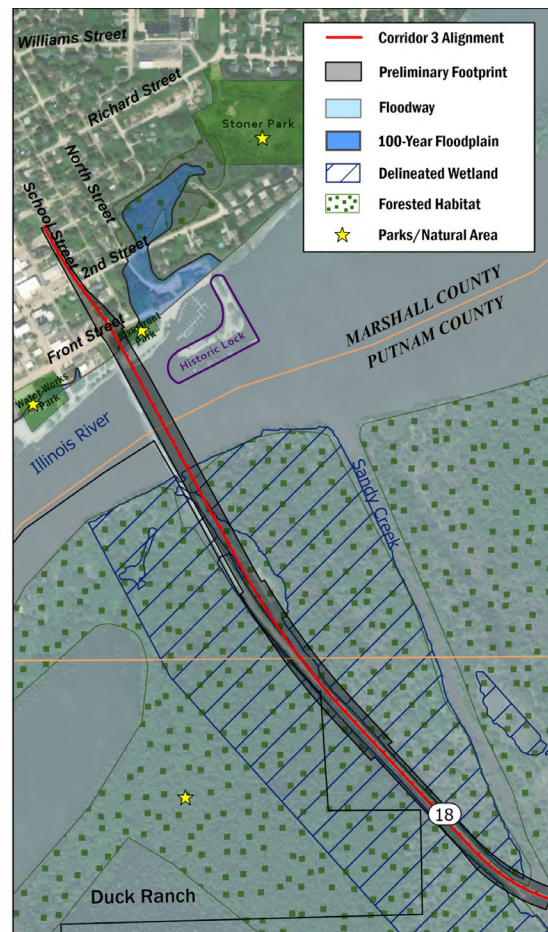
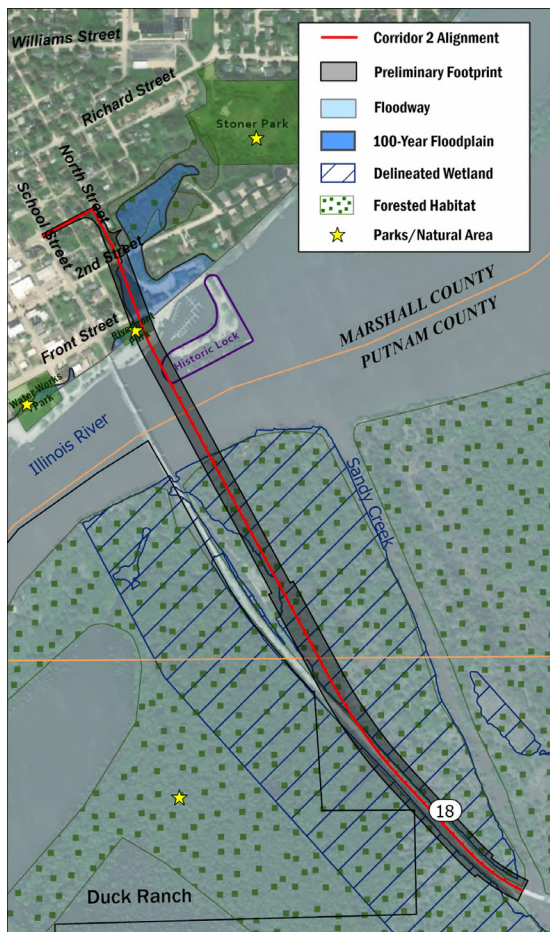
- Street Network
 - Cromwell Drive spanned
 - Front Street closed at new IL 18 roadway
 - New IL 18 roadway ties down at 2nd Street
 - Between Front and 2nd Streets, access eliminated on north side of new IL 18
- 10 Parcels affected
- 4 Residential Displacements
- 2 Commercial Displacements



Evaluation of Potential Alignment Corridors

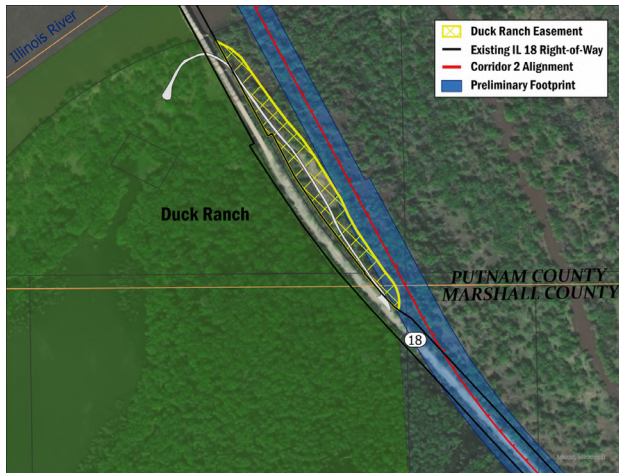
Environmental Impacts

The project alternatives are also reviewed by FHWA and federal and state environmental resource agencies to ensure environmental impacts are avoided or minimized.



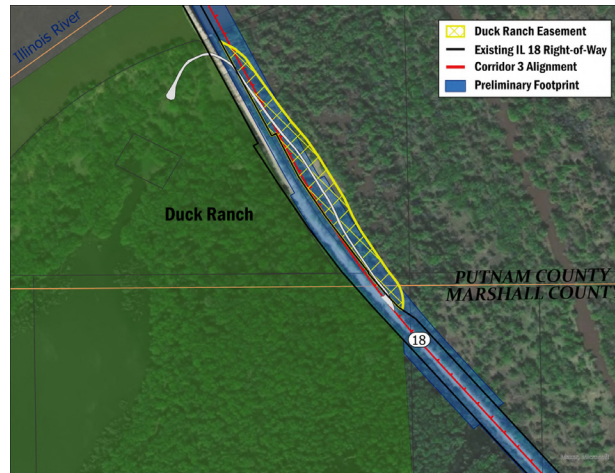
Evaluation of Potential Alignment Corridors

Summary of Impacts to Duck Ranch



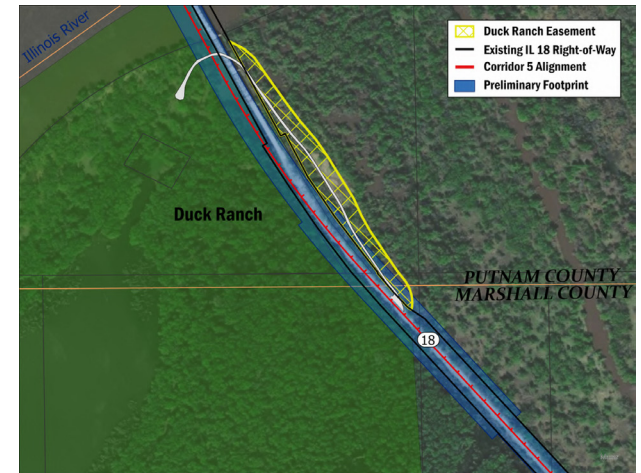
Corridor 2 Alignment

- Impact to Duck Ranch Property: 0.0 acres
- Impact to Duck Ranch Easement: 0.5 acres
- Anticipated 4(f) Impact: *De minimis*



Corridor 3 Alignment

- Impact to Duck Ranch Property: 0.0 acres
- Impact to Duck Ranch Easement: 3.3 acres
- Anticipated 4(f) Impact: *De minimis*



Corridor 5 Alignment

- Impact to Duck Ranch Property: 5.0 acres
- Impact to Duck Ranch Easement: 0.7 acres
- Anticipated 4(f) Impact: *De minimis*

Evaluation of Potential Alignment Corridors

Summary of estimated impacts

Screening Criteria	Alternative			
	No-Build	Bridge Replacement		
		Corridor 2 Alignment	Corridor 3 Alignment	Corridor 5 Alignment
Community Issues of Importance				
Maintains traffic through downtown Henry	Yes	Yes	Yes	Yes
Existing bridge can remain open during construction	N/A	Yes	Yes	Yes
Maintains existing intersections	Yes	1 intersection eliminated	1 intersection eliminated	1 intersection eliminated
Maintains access to existing residences and businesses	Yes	Access along North St. affected	Access along Front St. affected	Access along Front St. affected
Maintains access to riverfront and recreational use	Yes	Yes	Yes	Yes
Preserves historic features of the city	Yes	No	Yes	Yes
Environmental Impacts				
Right-of-way	0 acres	33 acres	9 acres	10 acres
Residential Displacements	0	5	7	4
Commercial Displacements	0	0	1	2
Historic Section 106/4(f) Resources	0	2 (IL 18 Bridge, Historic Lock)	1 (IL 18 Bridge)	1 (IL 18 Bridge)
Recreational Section 4(f) Resources	0	2 (Duck Ranch, Riverfront Park)	1 (Duck Ranch)	1 (Duck Ranch)
Floodway	0.0 acres	12.6 acres	12.1 acres	11.2 acres
Floodplain	0.0 acres	0.0 acres	0.0 acres	0.0 acres
Wetlands	0.0 acres	7.7 acres	3.8 acres	4.2 acres
Forested Habitat	0.0 acres	12.3 acres	8.5 acres	6.8 acres
Special Waste Sites	0	3	5	7
Farmland	0 acres	0 acres	0 acres	0 acres
Water Supply Wells	0	0	0	0
Environmental Justice Communities	0	0	0	0
Section 6(f)/OSLAD	0	0	0	0
Threatened/Endangered Species	0	0	0	0
Cost				
Estimated Construction Cost	N/A	\$105.8M	\$81.1M	\$79.0M
Alternative Carried Forward or Eliminated	Carried Forward	Eliminated	Carried Forward	Carried Forward

- Corridor 2 was eliminated from further consideration with consensus from the CAG.
- No-Build and the Corridor 3 and Corridor 5 alignments retained as Alternatives Carried Forward for more detailed evaluation.

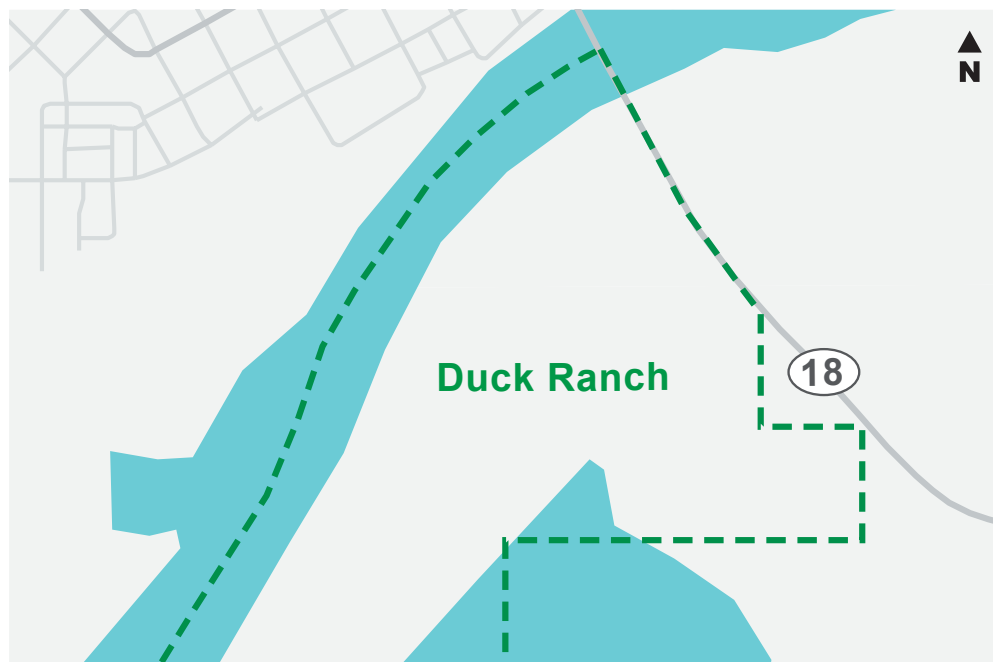
Section 106 and Section 4(f)

Section 106 of the National Historic Preservation Act

- Consider the effects of federally funded projects on historic properties
- Identify historic properties, assess the effects and explore alternatives to avoid, minimize, or mitigate adverse effects

Section 4(f) Properties

- Publicly-owned public parks, recreational areas of national, state, or local significance, wildlife or waterfowl refuges; or lands from a historic site of national, state, or local significance
- Determine that there is no feasible and prudent alternative to avoid the Section 4(f) properties
- Includes all possible planning to minimize harm to the Section 4(f) properties



Example: Duck Ranch owned by the Illinois Department of Natural Resources is a Section 4(f) property

Land Acquisition



Phase I Study will identify project location, construction limits, and right-of-way needs



Land acquisition cannot begin until Phase I study is approved



Land acquisition follows federal regulations and offers are based on Fair Market Value

Alternatives to be Carried Forward - Next Steps



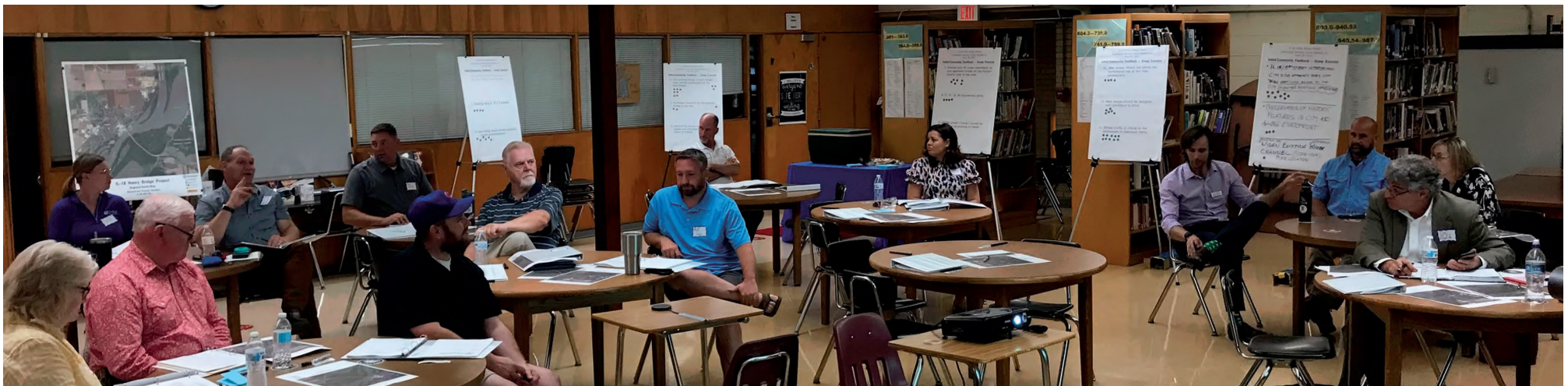
Comments received by July 27th become part of the public record

This will document the selection of the Preferred Alternative



Public Involvement Activities

- **Stakeholder Meetings** – One-on-one meetings with stakeholders
- **Context Audit** – Survey to identify characteristics that define the project
- **Community Advisory Group** – Small group of local stakeholders
- **Public Meetings** – Large meetings open to the public to gather input and to provide updates on the project (2 meetings)
- **Public Hearing** – Large meeting open to the public to present the environmental document and the preferred alternative and to receive comments (1 meeting)
- **Project Website** – www.IL18RiverBridgeProject.com



Opportunities for Participation



Public Meeting #2 – June 29, 2022

- Comments received through July 27th become part of the public meeting record



Future Public Hearing to Present Preferred Alternative



IL18RiverBridgeProject.com

- Public comment
 - Study news, reports, and information
 - Subscribe for updates
-

Appendix D – Comment Forms and Website Comments Received

PUBLIC MEETING 2 – June 29, 2022 COMMENT FORM

Thank you for completing this comment form for the IL 18 River Bridge Project. Your input is greatly appreciated and will help inform the project team.

1. The purpose of this meeting is to present the Range of Alternatives for the project and obtain your input on these alternatives. *Please share your thoughts on the alternatives and the evaluation process presented this evening.*

I APPRECIATE THE THOROUGHNESS OF THE PRESENTATIONS. MANY QUESTIONS I HAD WERE ANSWERED THROUGH THE STORY BOARDS. I WAS CURIOUS IF THE CLEARANCE FROM MEAN WATER LEVEL WILL INCREASE TO ALLOW LARGER VESSELS TO PASS OR TO ALLOW MORE FLOOD PERIODS TO ALLOW TRAFFIC TO CONTINUE.
I BELIEVE THE GROUP WORKING ON THIS PROJECT HAS DONE A GREAT JOB AND THAT THE EVALUATION PROCESS HAS BEEN THOROUGH AND HONEST.

2. The project team will be selecting a Preferred Alternative following this meeting. *Do you see any advantages or disadvantages to either the Corridor 3 Alignment or the Corridor 5 Alignment? If so, what are these advantages and disadvantages?*

BOTH OF THESE CORRIDORS ARE ESSENTIALLY EQUAL. THAT BEING SAID, IF FRONT STREET IS BLOCKED I THINK THE CORRIDOR 5, WHICH GIVES MORE ROOM FOR MARINA ACCESS AND DEVELOPMENT AS WELL AS LOWER COST OVERALL IS THE BETTER OF THE TWO CHOICES.

3. How did you find out about this public meeting? Please check all that apply.

Elected Official Project Website Newspaper Advertisement
 Project Email Word of Mouth If so, which newspaper?
 Other: WPT FB PAGE

4. What information did you hope to gather from this meeting? Please provide any thoughts you have on the helpfulness of information presented, meeting format, meeting venue, publicity efforts, or other meeting-related feedback.

CORRIDOR ALTERNATIVES APPROACH UPGRADE, SHOULDER SIZE FOR BICYCLE'S PED ACCESS

5. Additional comments regarding the project and/or today's public meeting:

THANK YOU!

6. About You

Name: FRANK KORFIAS Email: frankkorfias@attlock.com
Address: 715 MAW ST Affiliation: CITIZEN OF ILLINOIS
HENRY, IL 62537

There are many ways to comment!

- Drop this form in our **comment box** here tonight
- **Mail** this form to the address below
- Send an **email** to the project team at Contact@IL18RiverBridgeProject.com
- Fill out an **online comment form** at www.IL18RiverBridgeProject.com/questions-comments

We welcome your questions and comments at any time and encourage you to provide input throughout the life of the project. Comments received by **July 27th, 2022** will be considered in the Alternatives to be Carried Forward analysis.

THANK YOU!

IL 18 River Bridge Project
Parsons
10 South Riverside Plaza, Suite 400
Chicago, Illinois 60606
ATTN: Tony Pakeltis

I.D.O.T.
Received

JUL 18 2022

Region 3 / District 4
401 Main St. Peoria, IL

July 14, 2022

Illinois Department of Transportation
Region 3 / District 4
401 Main Street
Peoria, IL 61602-1111



Joyce Wood
409 Front Street
Henry, IL 61537

TO WHOM IT MAY CONCERN:

On June 29, 2022, I attended Public Meeting #2 in Henry concerning the selection of a corridor for the new bridge. At that meeting, I was made aware that, if the Corridor 3 Alignment were to be the final choice, my home would be affected as a portion of my lot would be used for a hill beside the new bridge. At that time, my main concern was the effect of runoff after a heavy rain. It would be possible for the runoff to flood my lot and home.

After much thought, I feel that this would not be the only effect. Corridor 3 would also be very close to my home (less than 10 feet), with no protection from exhaust fumes and the sounds of traffic. This corridor would also adversely affect the value of my home. The very close location to IL 18, with no buffer zone would be an additional factor in the negative effect on the value of my home.

I appreciate your consideration of these factors in your decision for planning a corridor for the IL 18 River Bridge Project.

Sincerely,

A handwritten signature in cursive script that reads "Joyce Wood".

Joyce Wood

COMMENT #1: Jami Haffner

From: Squarespace <form-submission@squarespace.info>
Sent: Wednesday, June 29, 2022 1:32 PM
To: IL 18 River Bridge Project <il18riverbridgeproject@F-W.com>
Subject: [EXTERNAL] Form Submission - New Form - Henry

Sent via form submission from www.il18riverbridgeproject.com [il18riverbridgeproject.com]

Name: Jami Haffner

Email: momofchaos2@gmail.com

Subject: Henry

Message: I saw a possible alternative was doing nothing. How can you not build a new bridge? This bridge rating is very low

Does this submission look like spam? [Report it here. \[squarespace.com\]](#)

COMMENT #2: Laurie Greider

On Fri, Jul 8, 2022 at 7:02 AM Squarespace <form-submission@squarespace.info> wrote:

Sent via form submission from www.il18riverbridgeproject.com [il18riverbridgeproject.com]

Name: Laurie Greider

Email: hlauraann@aol.com

Subject: Henry River Bridge

Message: I hope you will keep the old one up until new one is completed. When will all the construction begin?

Does this submission look like spam? [Report it here. \[squarespace.com\]](#)

COMMENT #3: Amy Hernandez

Sent: Wednesday, July 13, 2022 5:06 PM

To: IL 18 River Bridge Project <il18riverbridgeproject@F-W.com>

Subject: [EXTERNAL] Form Submission - New Form - Route 18 bridge

Sent via form submission from www.il18riverbridgeproject.com [il18riverbridgeproject.com]

Name: Amy Hernandez

Email: amyhernandez@yahoo.com

Subject: Route 18 bridge

Message: I wish I could have made the meeting, but I had to work at my restaurant, Rio Vista. I had a friend of mine attend and reviewed the brochures which included both plans. I am a longtime resident of Henry and I feel it is important to look at long term effects of such a large endeavor. The river front has always been a focal point of our community. I feel the harbor, hotel and surrounding property provides beauty and opportunities for economic development. Placing the bridge too close could be detrimental to the visual aesthetics of our beautiful harbor. The historic lock walls are historic and need to be preserved. I would hope considerations are being taken to make sure this landmark is preserved. Finally, the dump that was located on the side is being studied. They could be some toxic substances that have been buried and disturbing them could possibly be environmentally hazardous. This bridge, after construction will be in place for years to come. I hope that the future generations will enjoy our beautiful landscape and the bridge will become an integral part of our community.

Does this submission look like spam? [Report it here. \[squarespace.com\]](#)

Appendix E – Responses to Submitted Comments



Illinois Department of Transportation

Office of Highways Project Implementation / Region 3 / District 4
401 Main Street / Peoria, Illinois 61602-1111

August 29, 2022

**BUREAU OF PROGRAM DEVELOPMENT
STUDIES & PLANS – PHASE I**

FAP Route 653 (IL 18)

Section (104B-D)BR

Location: S.N. 062-0036 carrying IL 18 over the Illinois River at Henry
Marshall and Putnam Counties

Job No. P-94-007-20

Catalog No. 035761-00P

Mr. Frank Korfias
715 Main Street
Henry, Illinois 61537

Dear Mr. Korfias:

Thank you for attending the June 29, 2022, Public Meeting for the IL Route 18 River Bridge Project. The project team appreciates that you took the time to attend the meeting and to provide written comments on the project. Input received from you and from other meeting participants will be vital to identifying the preferred alternative for the IL Route 18 River Bridge Project that best balances the transportation needs of the project with the concerns and values of the community.

The replacement of the existing bridge involves input from the US Coast Guard regarding the required navigation clearance beneath a replacement bridge. Typically, the US Coast Guard requires some modest improvement in navigation clearance to facilitate improved operations for river carriers/barges. In the case of the IL Route 18 bridge replacement, the US Coast Guard has mandated that vertical clearance be increased by about 2.5' beneath the main span.

As part of the bridge redesign, and factoring in improved clearance beneath the mainspan, vertical clearance is expected to remain about the same, or possibly increase by 1.0 ft. or so over the side channel adjacent to the main channel.

Also in the side channel, a pier that presently sits well in the normal flow is anticipated to be relocated closer to the bank area. See illustration on the following page.

The next step in the project development process will be to select a Preferred Alternative. As part of that selection process, all potential social, economic, and environmental impacts will be considered to identify the best alternative for this project, including potential impacts to marina access and development.

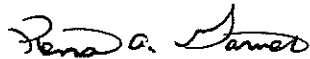
Mr. Frank Korfias
August 29, 2022
Page 2

Your input to the IL Route 18 River Bridge Project is appreciated. If you have additional comments or questions, please feel free to use the comment form on the project website or write to the address below.

Kensil A. Garnett, P.E.
Region Three Engineer
Illinois Department of Transportation
Region Three/District Four
401 Main Street
Peoria, Illinois 61602-1111

If you have any questions, please contact Travis Wallenfang at (309) 671-3474 and by email at Travis.Wallenfang@Illinois.gov.

Sincerely,

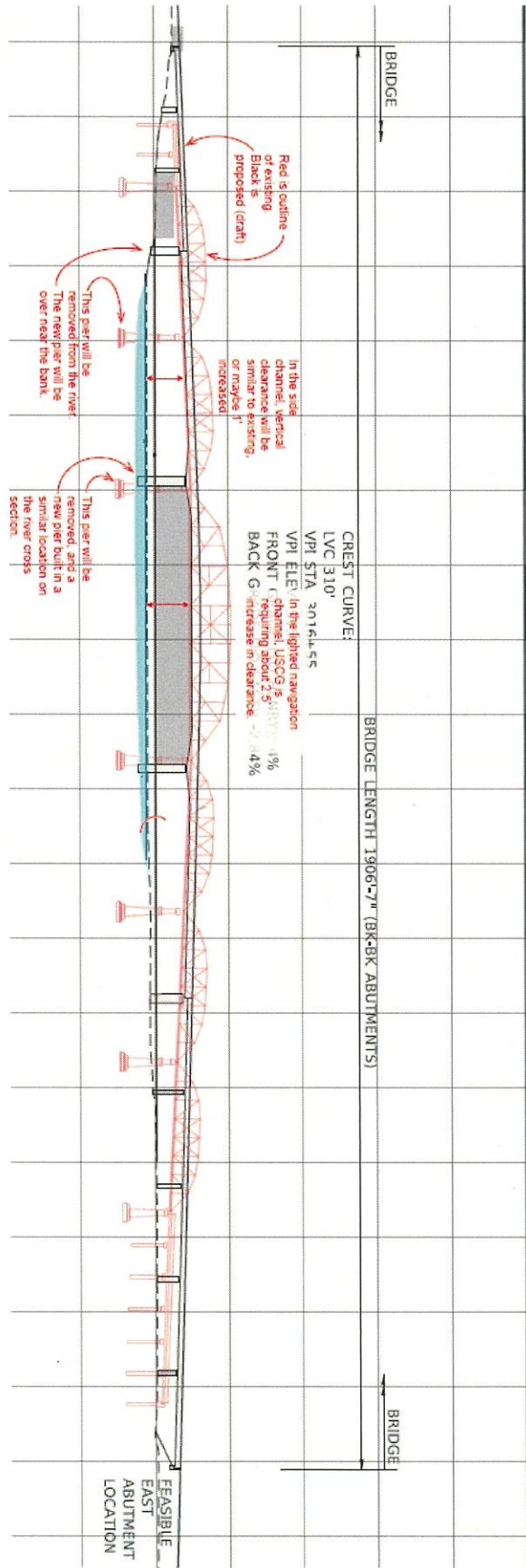


Kensil A. Garnett, P.E.
Region Three Engineer

TW:tdp\tw010_il 18 henry bridge_public meeting response-frank korfias_twallenfang_2022-08-29.docx

Enclosure

cc: Project File (T. Wallenfang)
Project Engineer (M. Addis)
Studies & Plans Engineer (M. Otten)
Program Development Engineer (K. Dvorsky)





Illinois Department of Transportation

Office of Highways Project Implementation / Region 3 / District 4
401 Main Street / Peoria, Illinois 61602-1111

August 29, 2022

BUREAU OF PROGRAM DEVELOPMENT
STUDIES & PLANS – PHASE I

FAP Route 653 (IL 18)

Section (104B-D)BR

Location: S.N. 062-0036 carrying IL 18 over the Illinois River at Henry
Marshall and Putnam Counties

Job No. P-94-007-20

Catalog No. 035761-00P

Ms. Joyce Wood
409 Front Street
Henry, Illinois 61537

Dear Ms. Wood:

Thank you for coming to our Public Meeting for the IL Route 18 River Bridge Project held on June 29, 2022. We received your letter, dated July 14, 2022, regarding concerns about the possible impacts of one of the potential re-alignments of IL Route 18 to your property.

As presented at the Public Meeting, Corridors 3 and 5 are being carried forward as potential alignments for the IL Route 18 River Bridge Project. At this stage in the study, both alternatives are being evaluated in further detail to determine the impacts of each on the surrounding properties. Impacts are quantified for residential properties (such as your own), commercial properties, natural resources (woodlands, wetlands, etc.), recreational areas, and more; and used to compare the remaining alternatives. IDOT then works with other entities to reach a consensus on the preferred alternative to be carried forward for design.

IDOT understands that the potential of having your property affected by a project can be distressing and assures you that impacted property owners have rights defined under Federal and State laws in these instances, the most important being that you will receive just compensation if your property needs to be acquired for the project.

Ms. Joyce Wood
August 29, 2022
Page 2

If an alignment is chosen that does impact your property, it would be appraised by a licensed appraiser who is experienced in this kind of work. The appraiser would look at your home as it currently exists and determine the Fair Market Value of the property. Next, they would look at what would be like after the project. If they determine that the presence of the new roadway would negatively affect your property value, you would receive compensation for the diminished value of your property. If, as you state in your letter, the new right-of-way for the roadway is within ten feet of your house, you would have the option to ask IDOT to buy your property and be eligible for relocation benefits.

If you have additional questions or concerns, please contact our Land Acquisition Engineer, Mr. Jim Miller, by telephone at (309) 671-3494 or by email at James.P.Miller@Illinois.gov.

Sincerely,



Kensil A. Garnett, P.E.
Region Three Engineer

TW:tdp\tw010_il 18 henry bridge_public meeting response-joyce wood_twallenfang_2022-08-29.docx

cc: Project File (T. Wallenfang
Project Engineer (M. Addis)
Studies & Plans Engineer (M. Otten)
Program Development Engineer (K. Dvorsky)

From: [IL 18 River Bridge Project](#)
To: momofchaos2@gmail.com
Subject: Re: [EXTERNAL] Form Submission - New Form - Henry
Date: Friday, July 15, 2022 11:01:00 AM

Thank you for your question regarding the IL 18 River Bridge Project and the potential “no-build” alternative. For reference, your question is included below.

As a part of the study, the Illinois Department of Transportation (IDOT) is evaluating several potential alternatives to replace the existing bridge. In addition to these "build" alternatives, IDOT also considers the impacts of not building a new structure. The National Environmental Policy Act (NEPA) requires the evaluation of a No-Build Alternative. The No-Build Alternative serves as the baseline to which the other alternatives are compared. For all of these alternatives, IDOT needs to document the need for the improvement in order to justify the expenditure of funds.

As you noted below, the bridge rating is very low, and this condition will weigh heavily towards providing an improvement, rather than not building a new structure. As the study progresses, the negatives of not building a new river crossing will be compared to the benefits and impacts of building a new bridge. The study still has several months of evaluation to go, but once evaluations are complete, a public hearing will be held to present the results and gather public comments on the Preferred Alternative.

We appreciate your interest in this important regional project. If you have additional questions or comments, please feel free to respond to this email, use the comment form on the website, or write to the address below.

Sincerely,
IL 18 River Bridge Project Team

Illinois Department of Transportation
Region 3 / District 4
401 Main Street
Peoria, IL 61602-1111

On Wed, Jun 29, 2022 at 1:31 PM Squarespace <form-submission@squarespace.info> wrote:

Sent via form submission from www.il18riverbridgeproject.com
[\[il18riverbridgeproject.com\]](http://il18riverbridgeproject.com)

Name: Jami Haffner

Email: momofchaos2@gmail.com

Subject: Henry

Message: I saw a possible alternative was doing nothing. How can you not build a new bridge? This bridge rating is very low

Does this submission look like spam? Report it here.

From: [IL 18 River Bridge Project](#)
To: hlauraann@aol.com
Subject: Re: [EXTERNAL] Form Submission - New Form - Henry River Bridge
Date: Friday, July 15, 2022 11:10:12 AM

Thank you for your questions regarding the IL 18 River Bridge Project. Your questions regarding use of the existing bridge until the new one is completed and the timing of construction are included below for your reference.

As a part of the study, the Illinois Department of Transportation has investigated several alternatives for the proposed improvements, including options to keep the existing bridge open during construction. If a new structure is proposed on a new alignment, the existing bridge can remain open for the majority of the construction period. If a new structure is proposed on the existing alignment, however, the crossing would have to be closed during construction. Currently, the two remaining bridge replacement alternatives under consideration are on new alignments which will allow the existing bridge to remain open. As more information becomes available about these alternatives, details regarding any short-term closures, if needed, to connect the new bridge to the existing roadway will be developed.

The timing for construction has not been determined yet. The project is still in the Phase I planning stage, which should conclude early next year. Following this planning stage, Phase II design work can begin. The design stage develops the actual plans used to build the bridge and is anticipated to last two years. The construction can begin once the plans are complete, any needed land is acquired, and the necessary permits are approved. The target for construction to begin is in 2026.

Your input to keep the existing bridge open during construction is appreciated. If you have additional comments or questions, please feel free to respond to this email, use the comment form on the project website, or write to the address below.

Sincerely,
IL 18 River Bridge Project Team

Illinois Department of Transportation
Region 3 / District 4
401 Main Street
Peoria, IL 61602-1111

On Fri, Jul 8, 2022 at 7:02 AM Squarespace <form-submission@squarespace.info> wrote:

Sent via form submission from www.il18riverbridgeproject.com
[\[il18riverbridgeproject.com\]](http://il18riverbridgeproject.com)

Name: Laurie Greider

Email: hlauraann@aol.com

Subject: Henry River Bridge

Message: I hope you will keep the old one up until new one is completed. When will all the construction begin?

From: [IL 18 River Bridge Project](#)
To: amyhernandez@yahoo.com
Subject: Re: [EXTERNAL] Form Submission - New Form - Route 18 bridge
Date: Tuesday, August 30, 2022 8:27:50 AM

Thank you for your comments regarding the IL 18 River Bridge Project. Input received from you and from meeting participants will be vital to identifying the preferred alternative for the IL 18 River Bridge Project that best balances the transportation needs of the project with the concerns and values of the community.

The next step in the project development process will be to select a Preferred Alternative. As part of that selection process, all potential social, economic, and environmental impacts will be considered to identify the best alternative for this project, including potential impacts to historic resources including the lock. Potential impacts to any sites affected by special waste, including hazardous materials, will also be evaluated. IDOT will also be evaluating aesthetics as part of the public involvement and Context Sensitive Solutions process being undertaken for this project.

We appreciate your interest in this important regional project. If you have additional questions or comments, please feel free to respond to this email, use the comment form on the website, or write to the address below.

Sincerely,
IL 18 River Bridge Project Team

Illinois Department of Transportation
Region 3 / District 4
401 Main Street
Peoria, IL 61602-1111

On Wed, Jul 13, 2022 at 5:06 PM Squarespace <form-submission@squarespace.info> wrote:

Sent via form submission from www.il18riverbridgeproject.com
[\[il18riverbridgeproject.com\]](http://il18riverbridgeproject.com)

Name: Amy Hernandez

Email: amyhernandez@yahoo.com

Subject: Route 18 bridge

Message: I wish I could have made the meeting, but I had to work at my restaurant, Rio Vista. I had a friend of mine attend and reviewed the brochures which included both plans. I am a longtime resident of Henry and I feel it is important to look at long term effects of such a large endeavor. The river front has always been a focal point of our community. I feel the harbor, hotel and surrounding property provides beauty and opportunities for economic

development. Placing the bridge too close could be detrimental to the visual aesthetics of our beautiful harbor. The historic lock walls are historic and need to be preserved. I would hope considerations are being taken to make sure this landmark is preserved. Finally, the dump that was located on the side is being studied. They could be some toxic substances that have been buried and disturbing them could possibly be environmentally hazardous. This bridge, after construction will be in place for years to come. I hope that the future generations will enjoy our beautiful landscape and the bridge will become an integral part of our community.

Does this submission look like spam? [Report it here. \[squarespace.com\]](#)